



16 Brookdale Terrace Glenbrook NSW

4 2 2

LOCATION - Ideally located in a peaceful cul-de-sac in the sought after village side of Glenbrook (with easy access to the M4 providing direct routes into major CBD's) & within walking distance to the village centre, shops, restaurants, cafes, oval, playgrounds, cinema, school, rail, and bus.

STYLE - High-set single level brick home with tile roof nestled on a lovingly landscaped 704m² (approx.) block.

LAYOUT - When space and style come together to create the perfect family home; spacious open plan kitchen/dining, three generous family rooms, 4 bedrooms (two with built-in robes, the master with renovated en-suite & walk-in robe), newly renovated main family bathroom, fabulous outdoor area overlooking the landscaped gardens, laundry.

FEATURES - Sun drenched kitchen with stunning outlook, 900mm SMEG freestanding gas oven and cooktop with gas

Type : House
Price : \$ 1,520,000
Land Size : 704.2 sqm
View : <https://www.chapmanrealestate.com.au/sale/nsw/blue-mountains-surrounds/glenbrook/residential/house/7800924>

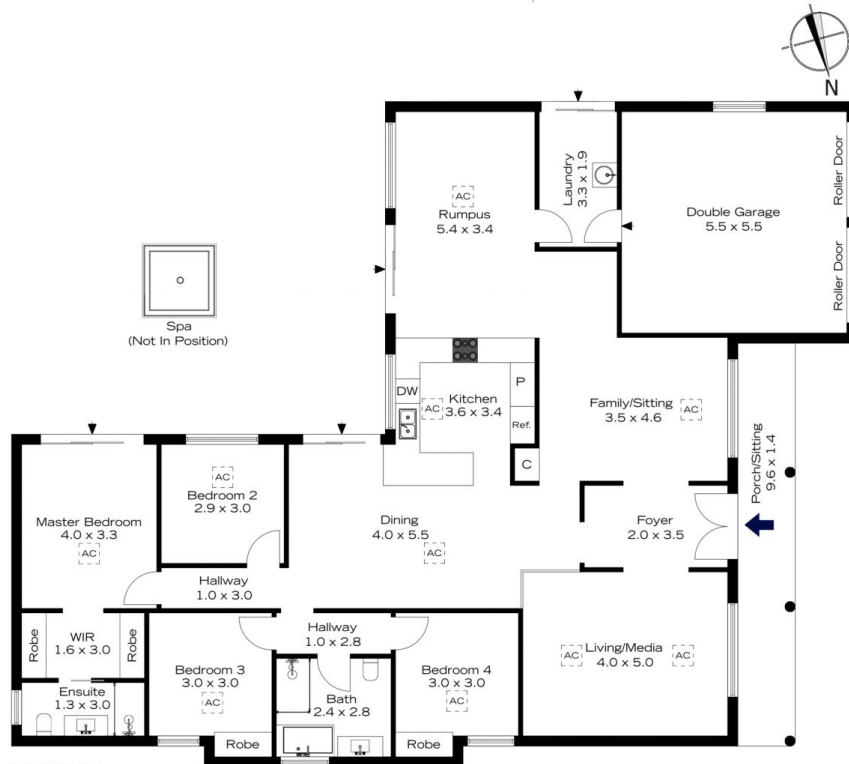


Sarah Watson
02 4739 4311

[For full version visit the website](https://www.chapmanrealestate.com.au)

<https://www.chapmanrealestate.com.au>

16 BROOKDALE TERRACE, GLENBROOK



INTERNAL
207 m²

EXTERNAL
14 m²

TOTAL
221 m²

The floor plan is not to scale; measurements are indicative and in metres. Exterior elements are not in position. Plans should not be relied on. Interested parties should make and rely on their own enquiries.

16 BROOKDALE TERRACE, GLENBROOK



INTERNAL
207 m²

EXTERNAL
14 m²

TOTAL
221 m²

The floor plan is not to scale; measurements are indicative and in metres. All features included in this 3D plan are for inspiration purposes only. This is not an exact replica of the property or the position of exterior elements. Plans should not be relied on. Interested parties should make and rely on their own enquiries.