



15 Barina Place Blaxland NSW

3 2 2

LOCATION: Nestled in a whisper quiet & highly desired cul-de-sac in Blaxland, yet within easy access to public schools, pre-school, shops, restaurants and bus. This stunning mountains home offers an enviable and popular location.

STYLE: Commanding brick and Colorbond tri-level home offering supreme privacy positioned on a generous 1034m2 (approx.) garden block.

LAYOUT: Family living at its best; entry level includes a study/bedroom, main bathroom, master suite with ensuite & walk-in and built-in robes overlooking the garden below; upper level encompasses a further two bedrooms with bush views; the lower level has a stunning living room and open plan kitchen/dining area with glass doors flowing out to the covered rear over-sized deck, internal laundry with

Type : House
Price : \$ 1,370,000
Land Size : 1034 sqm
View : <https://www.chapmanrealestate.com.au/sale/nsw/blue-mountains-surrounds/blaxland/residential/house/7776916>



Sarah Watson
02 4739 4311



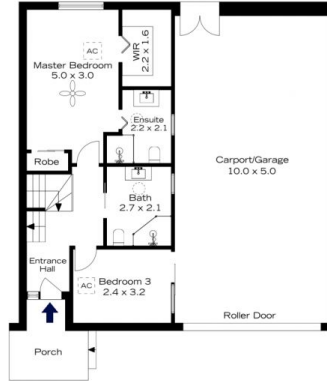
Rachel Power
02 4739 4311

[For full version visit the website](#)

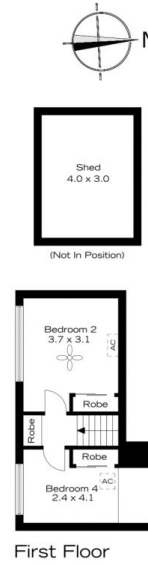
15 BARINA PLACE, BLAXLAND



Lower Ground Floor



Ground Floor



First Floor

INTERNAL
216 m²

EXTERNAL
59 m²

TOTAL
275 m²



The floor plan is not to scale; measurements are indicative and in metres. Exterior elements are not in position. Plans should not be relied on. Interested parties should make and rely on their own enquiries.

15 BARINA PLACE, BLAXLAND



Lower Ground Floor



Ground Floor



First Floor

INTERNAL
216 m²

EXTERNAL
59 m²

TOTAL
275 m²



The floor plan is not to scale; measurements are indicative and in metres. All features included in this 3D plan are for inspiration purposes only. This is not an exact replica of the property or the position of exterior elements. Plans should not be relied on. Interested parties should make and rely on their own enquiries.