



### 57 Pimelea Drive Woodford NSW

3 1 1

**LOCATION** -Positioned in a quiet street, offering a peaceful Mountains lifestyle, with access to an abundance of local bushwalks and trails, 2.5km to train station, 2.3km to local café, 5 minute drive to Hazelbrook Village with an assortment of specialty shops, café's, supermarket day and also multiple local schools.

**STYLE:** Backing to bush this single level brick and tile home sitting on a usable 817.2m2 approx block

**LAYOUT:** A classic floor plan featuring three good size bedrooms, all with built in robes. Open plan lounge, kitchen and dining area which leads out to the rear yard. A good size updated main bathroom with separate toilet and an internal laundry with additional external access.

**FEATURES:** A renovated kitchen with stone tops and

**Price** : \$ 778,000  
**Land Size** : 817.2 sqm  
**View** : <https://www.chapmanrealestate.com.au/sale/nsw/blue-mountains-surrounds/woodford/residential/house/7776347>



**Gary Stavrakis**  
02 4751 8266

# 57 PIMELEA DRIVE, WOODFORD



**INTERNAL**  
90 m<sup>2</sup>

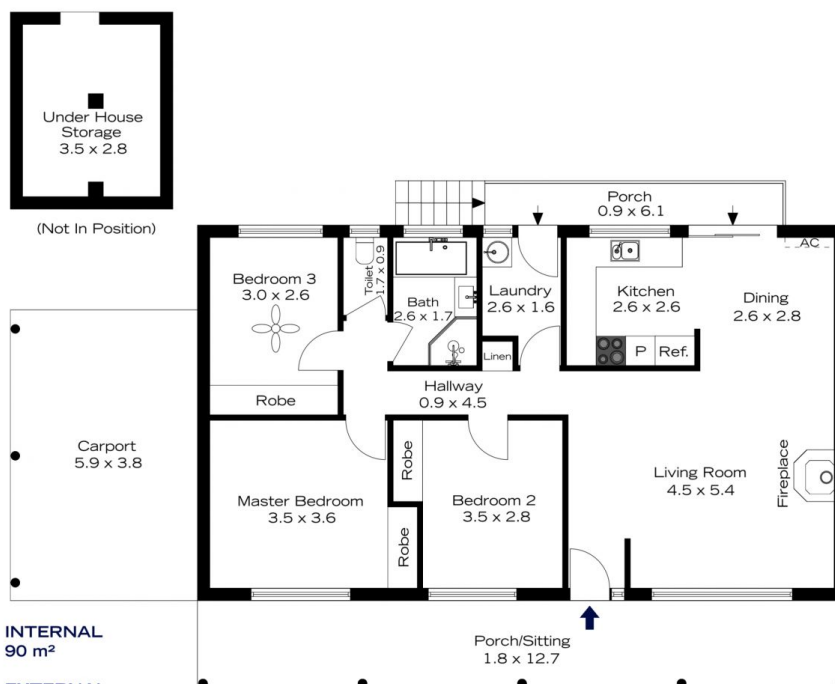
**EXTERNAL**  
52 m<sup>2</sup>

**TOTAL**  
142 m<sup>2</sup>



The floor plan is not to scale; measurements are indicative and in metres. All features included in this 3D plan are for inspiration purposes only. This is not an exact replica of the property or the position of exterior elements. Plans should not be relied on. Interested parties should make and rely on their own enquiries.

# 57 PIMELEA DRIVE, WOODFORD



**INTERNAL**  
90 m<sup>2</sup>

**EXTERNAL**  
52 m<sup>2</sup>

**TOTAL**  
142 m<sup>2</sup>



The floor plan is not to scale; measurements are indicative and in metres. Exterior elements are not in position. Plans should not be relied on. Interested parties should make and rely on their own enquiries.