



106 Governors Drive Lapstone NSW

3 1 2

LOCATION - Located on a tree-lined street in a tranquil and highly desired pocket of Lapstone. Only a short walk to rail, Lapstone Public School, parks, oval, tennis and netball courts, this property is also only a short 3 min drive to Glenbrook village with its shops and cafes, and convenient access to M4 motorway.

STYLE - On a rare flat block of approximately 733sqm, this lovely single level brick home offers easy living and is offered to the market for the first time in over 50 years. With a light filled layout and an established garden, this property is perfect for a young family, empty nesters, savvy investors, or for someone simply looking to get creative.

LAYOUT - Combined living and dining room, 3 bedrooms, original bathroom with separate toilet and external laundry.

FEATURES - Well-appointed kitchen with granite benches

Type : House
Price : \$ 1,020,000
Land Size : 733.5 sqm
View : <https://www.chapmanrealestate.com.au/sale/nsw/blue-mountains-surrounds/lapstone/residential/house/7752789>



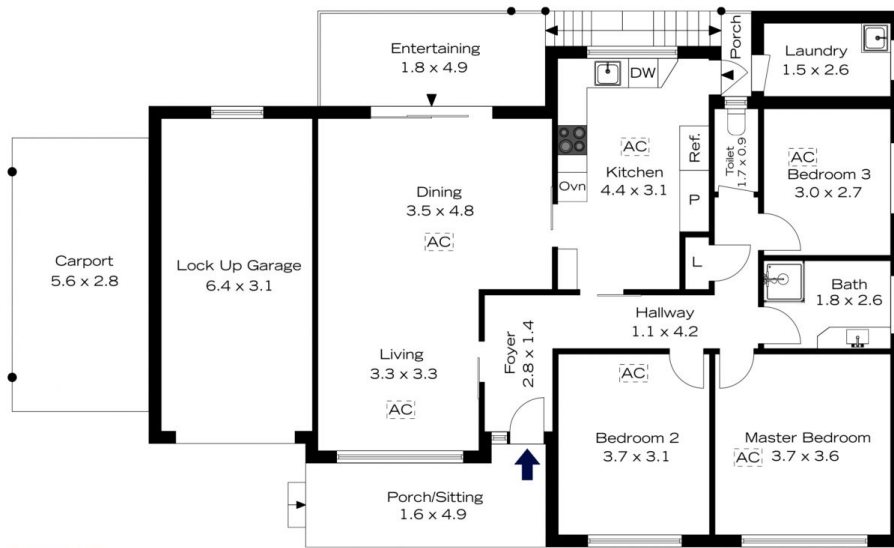
Sharon Lampert
02 4739 4311



Sarah Watson
02 4739 4311

[For full version visit the website](https://www.chapmanrealestate.com.au)

106 GOVERNORS DRIVE, LAPSTONE



INTERNAL
134 m²

EXTERNAL
35 m²

TOTAL
169 m²



The floor plan is not to scale; measurements are indicative and in metres. Exterior elements are not in position. Plans should not be relied on. Interested parties should make and rely on their own enquiries.

106 GOVERNORS DRIVE, LAPSTONE



INTERNAL
134 m²

EXTERNAL
35 m²

TOTAL
169 m²



The floor plan is not to scale; measurements are indicative and in metres. All features included in this 3D plan are for inspiration purposes only. This is not an exact replica of the property or the position of exterior elements. Plans should not be relied on. Interested parties should make and rely on their own enquiries.