



6 Maxwell Place Blaxland NSW

5 3 3

LOCATION - Beautifully secluded yet right on the door step of all conveniences, this unique family home is sitting on a wonderful 1918sqm (approx.) parcel of land, with lush greenery, and boasts a tree top view. Indiscernibly, the home is approximately 140m to the train station and bus stop and within 750m to Highway access for travel up or down the Mountains.

STYLE - This exciting property is not just your average family home - it's distinctive design has plenty of room for everyone, including the self-contained lower level. The brick built and Colourbond roof residence takes full advantage of its position and delivers a charming family mountains abode.

[For full version visit the website](https://www.chapmanrealestate.com.au)

Type : House
Price : \$ 1,470,000
Land Size : 1918 sqm
View : <https://www.chapmanrealestate.com.au/sale/nsw/blue-mountains-surrounds/blaxland/residential/house/7746393>



Chris Rayner
02 4739 6200



Sharon Lampert
02 4739 4311



Lower Ground Floor

INTERNAL
289 m²

EXTERNAL
171 m²

TOTAL
460 m²

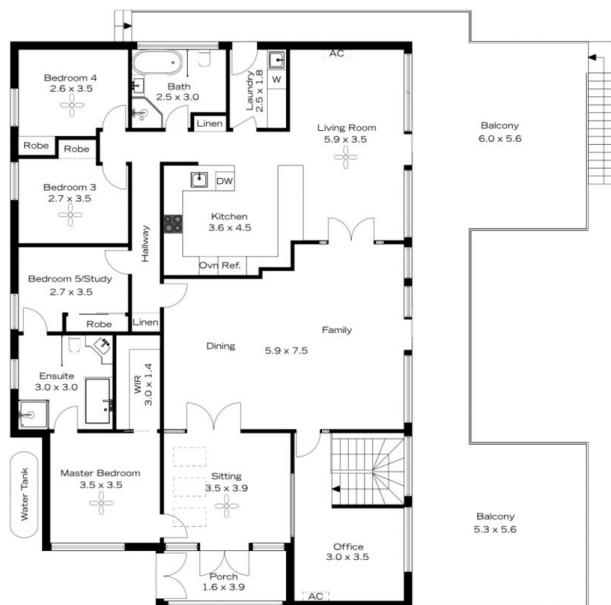


Ground Floor

The floor plan is not to scale; measurements are indicative and in metres. All features included in this 3D plan are for inspiration purposes only.
This is not an exact replica of the property or the position of exterior elements. Plans should not be relied on. Interested parties should make and rely on their own enquiries.



Lower Ground Floor



Ground Floor

INTERNAL
289 m²

EXTERNAL
171 m²

TOTAL
460 m²

The floor plan is not to scale; measurements are indicative and in metres. Exterior elements are not in position. Plans should not be relied on. Interested parties should make and rely on their own enquiries.