



310 Hawkesbury Road Winmalee NSW

3 1 1

LOCATION - Conveniently located on a 696m2 level block of land, just 400 meters from local shops and bus stops. Winmalee Shopping Centre is only 1km away, and you'll find a variety of public and private schools in proximity.

STYLE - Updated single level brick home with tile roof, set on approximately 696m2 block of usable space.

LAYOUT - Large open living area with a combustion fire that opens to a sizeable, modern kitchen and separate dining area. This residence features three bedrooms, two of which offer built-in robes. The three-way contemporary bathroom is designed for family convenience, offering a separate toilet, bath and a shower.

Type : House
Price : \$ 830,000
Land Size : 695.5 sqm
View : <https://www.chapmanrealestate.com.au/sale/nsw/hawkesbury/winmalee/residential/house/7745968>

[For full version visit the website](https://www.chapmanrealestate.com.au)



Gary Stavrakis
02 4751 8266



Hannah Cubby
02 4751 8266

310 HAWKESBURY ROAD, WINMALEE



INTERNAL
122 m²

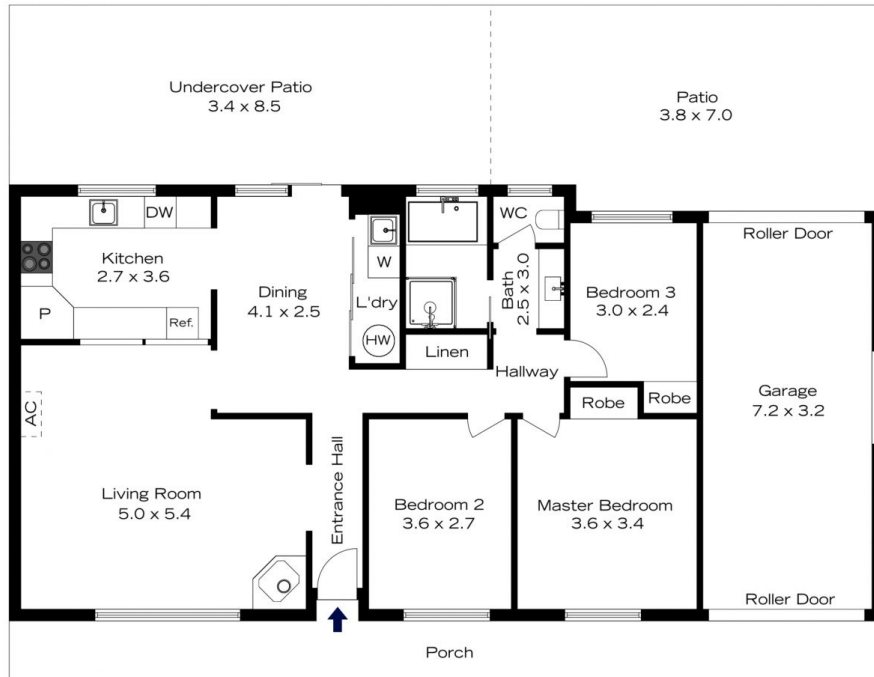
EXTERNAL
78 m²

TOTAL
200 m²



The floor plan is not to scale; measurements are indicative and in metres. All features included in this 3D plan are for inspiration purposes only. This is not an exact replica of the property or the position of exterior elements. Plans should not be relied on. Interested parties should make and rely on their own enquiries.

310 HAWKESBURY ROAD, WINMALEE



INTERNAL
122 m²

EXTERNAL
78 m²

TOTAL
200 m²



The floor plan is not to scale; measurements are indicative and in metres. Exterior elements are not in position. Plans should not be relied on. Interested parties should make and rely on their own enquiries.