



85 Leumeah Road Woodford NSW

3 1 1

LOCATION: Set comfortably in a whisper quiet pocket of Woodford and conveniently approx. 1.1km to the bus stop, 2.4km approx. to the train station and 4.7km approx. to Hazelbrook Village, local shops, cafes and amazing bush walks.

STYLE: Single level brick and tile home set on an approx. 697m² level block with a beautiful bush outlook.

LAYOUT: An easy flow floorplan encompasses 3 good size bedrooms, all with built in robes. The central open plan kitchen and dining area opens to a family room at the rear of the home overlooking the paved courtyard and sunny backyard. An additional separate lounge area to the front of the home provides extra space for the family. A good size

Type : House
Price : \$ 785,000
Land Size : 697 sqm
View : <https://www.chapmanrealestate.com.au/sale/nsw/blue-mountains-surrounds/woodford/residential/house/7737101>

[For full version visit the website](https://www.chapmanrealestate.com.au)



Chris Rayner
02 4739 6200



Claudia Hayes
02 4751 8266

85 LEUMEAH ROAD, WOODFORD



INTERNAL
131 m²

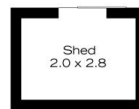
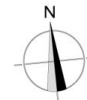
EXTERNAL
49 m²

TOTAL
180 m²

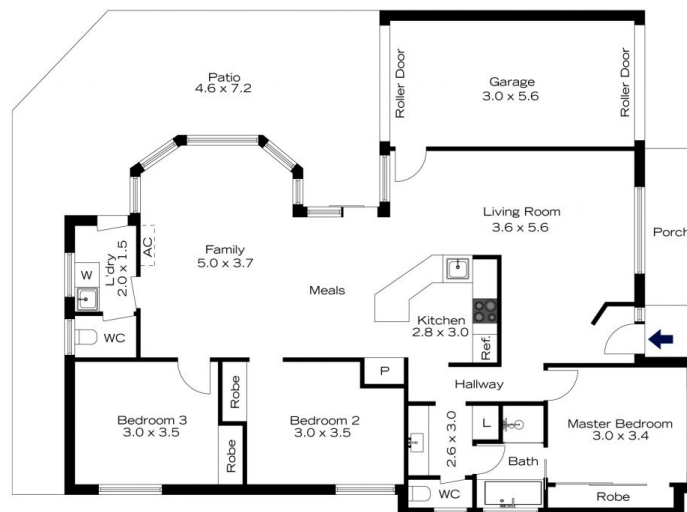


The floor plan is not to scale; measurements are indicative and in metres. All features included in this 3D plan are for inspiration purposes only. This is not an exact replica of the property or the position of exterior elements. Plans should not be relied on. Interested parties should make and rely on their own enquiries.

85 LEUMEAH ROAD, WOODFORD



(Not In Position)



INTERNAL
131 m²

EXTERNAL
49 m²

TOTAL
180 m²



The floor plan is not to scale; measurements are indicative and in metres. Exterior elements are not in position. Plans should not be relied on. Interested parties should make and rely on their own enquiries.