



30 Marguerite Avenue Mount Riverview NSW

3 1 1

LOCATION - Happily occupying a 548sqm parcel of land in a blissfully peaceful street this home enjoys the quiet convenience of being approx. 600m to the revered primary school, 200m to the bus stop and 270m to the local café and convenience store.

STYLE - Well maintained 3 bedroom brick and tile family home with a single garage, private fenced backyard and lovely big windows all around to look out over the front and rear grounds.

LAYOUT - The home's floorplan is suitably designed for comfortable everyday living with lounge and dining spaces to the left of the home and the bedrooms and bathroom privately set up the hallway to the right. The lounge room

Type : House
Price : \$ 800,000
Land Size : 548 sqm
View : <https://www.chapmanrealestate.com.au/sale/nsw/hawkesbury/mount-riverview/residential/house/7733987>



Chris Rayner
02 4739 6200

[For full version visit the website](#)

<https://www.chapmanrealestate.com.au>

30 MARGUERITE AVENUE, MOUNT RIVERVIEW



INTERNAL
117 m²

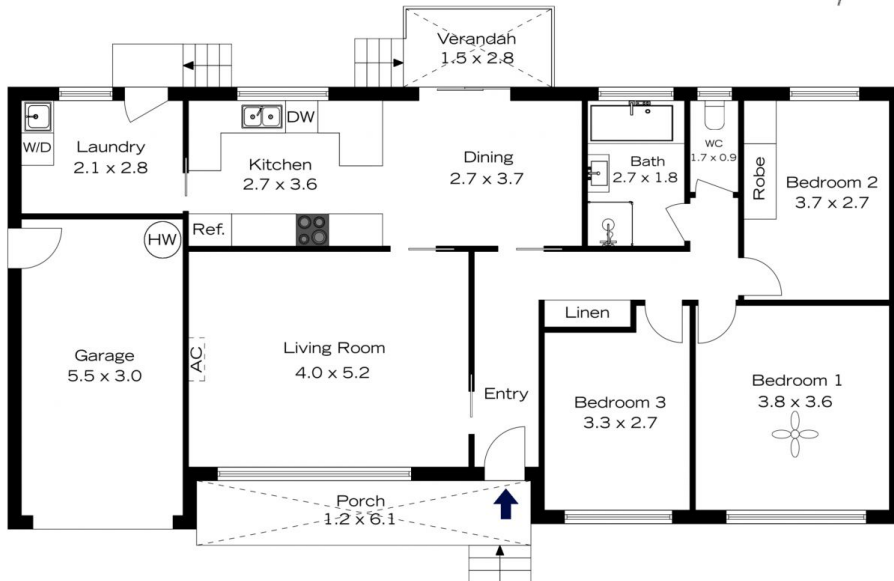
EXTERNAL
13 m²

TOTAL
130 m²



The floor plan is not to scale; measurements are indicative and in metres. All features included in this 3D plan are for inspiration purposes only. This is not an exact replica of the property or the position of exterior elements. Plans should not be relied on. Interested parties should make and rely on their own enquiries.

30 MARGUERITE AVENUE, MOUNT RIVERVIEW



INTERNAL
117 m²

EXTERNAL
13 m²

TOTAL
130 m²



The floor plan is not to scale; measurements are indicative and in metres. Exterior elements are not in position. Plans should not be relied on. Interested parties should make and rely on their own enquiries.