



28 The Glen Crescent Springwood NSW

2 1 1

LOCATION - Highly popular location, peaceful and quiet with convenient access (within 1km) to Springwood village, shops, cafes and rail, and within 230m to bus and popular bush walks.

STYLE - Brick and tile split level villa in strata title complex very close to town.

LAYOUT - 2 living spaces, generous lounge and separate open family/dining flowing outside to the glorious private courtyard, 2 double bedrooms with built-ins and feature painted brick wall, stunning renovated new kitchen and bathroom, single lock up garage under main roof (remote access) & additional under house storage with robust racking included.

FEATURES - Newly renovated large open plan kitchen with black & white feature tiles, soft close drawers, induction

Type : Villa

Price : \$ 700,000

View : <https://www.chapmanrealestate.com.au/sale/nsw/hawkesbury/springwood/residential/villa/7717161>



Helen Harris
02 4751 8266



Gary Stavrakis
02 4751 8266

[For full version visit the website](https://www.chapmanrealestate.com.au)

<https://www.chapmanrealestate.com.au>

28 THE GLEN CRESCENT, SPRINGWOOD



INTERNAL
84 m²

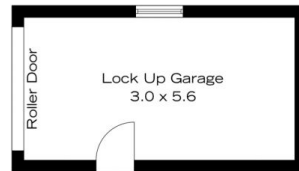
EXTERNAL
56 m²

TOTAL
140 m²

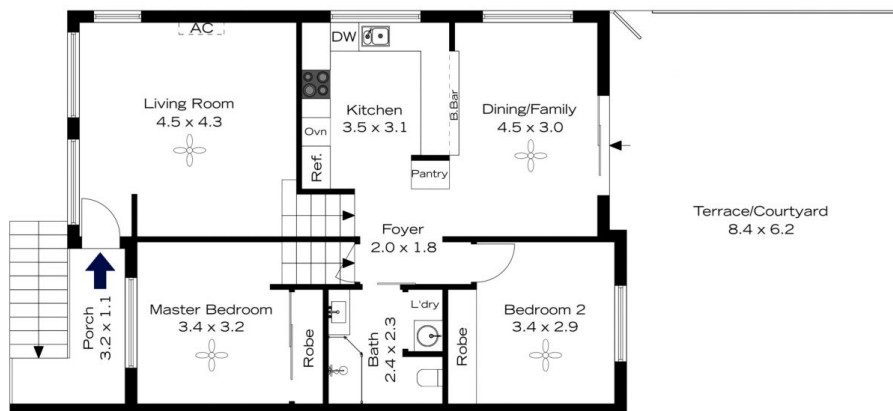


The floor plan is not to scale; measurements are indicative and in metres. All features included in this 3D plan are for inspiration purposes only. This is not an exact replica of the property or the position of exterior elements. Plans should not be relied on. Interested parties should make and rely on their own enquiries.

28 THE GLEN CRESCENT, SPRINGWOOD



(Not In Position)



INTERNAL
84 m²

EXTERNAL
56 m²

TOTAL
140 m²



The floor plan is not to scale; measurements are indicative and in metres. Exterior elements are not in position. Plans should not be relied on. Interested parties should make and rely on their own enquiries.