

4 Lewin Street Blaxland NSW

5 3 2

LOCATION - Relishing in the tranquillity that Mountains living offers and being tucked quietly away on an approx. 1,075sqm parcel of lush green land this home sits proudly in a quiet pocket of convenience. Boasting easy access within 1.1km to the local Primary School, 2.1km to day care centre, and 3.5km to the local High School getting the family where they need to go is effortless. For public transport needs, the bus stop is 280m from the home and the train station and Blaxland shopping village 2km away.

STYLE - A delightful, light filled family home ready to be lived in, loved and enjoyed. Showcasing a contemporary rendered brick veneer exterior and cement tile roof. Tiled through the entry and main kitchen/dining/living spaces whilst carpeted for comfort in the formal living spaces and bedrooms.

Land Size : 1074 sqm

View : <https://www.chapmanrealestate.com.au/sale/nsw/blue-mountains-surrounds/blaxland/residential/house/7716316>

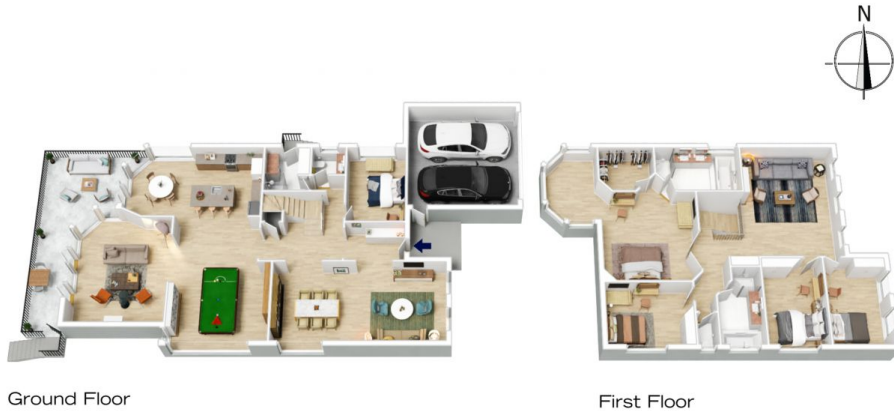


Chris Rayner
02 4739 6200



Rachel Power
02 4739 4311

4 LEWIN STREET, BLAXLAND



INTERNAL
341 m²

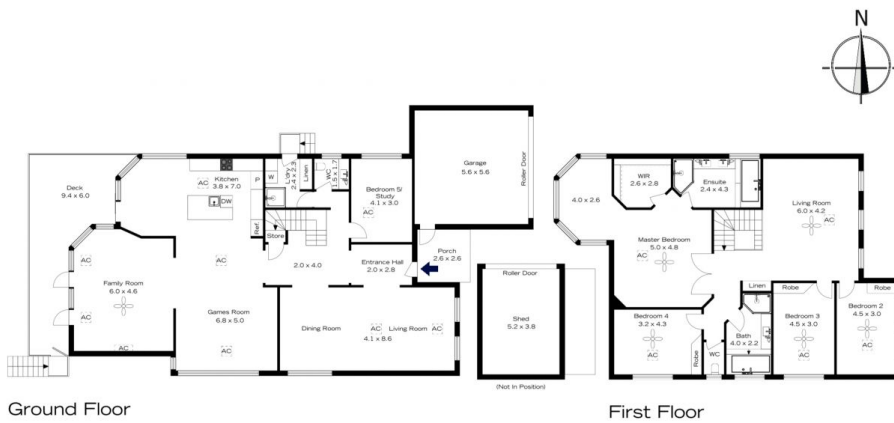
EXTERNAL
38 m²

TOTAL
379 m²



The floor plan is not to scale; measurements are indicative and in metres. All features included in this 3D plan are for inspiration purposes only. This is not an exact replica of the property or the position of exterior elements. Plans should not be relied on. Interested parties should make and rely on their own enquiries.

4 LEWIN STREET, BLAXLAND



INTERNAL
341 m²

EXTERNAL
38 m²

TOTAL
379 m²



The floor plan is not to scale; measurements are indicative and in metres. Exterior elements are not in position. Plans should not be relied on. Interested parties should make and rely on their own enquiries.