



30-32 Orama Road Hazelbrook NSW

4 2 2

LOCATION - Peacefully set on a level block of 1,012m² just 800m walk to Hazelbrook Station, convenient to shops, bush walks and local schools.

STYLE - Single level Allworth home of brick construction with tile roof.

LAYOUT - Three separate living spaces all of generous proportion - formal lounge, family room and rumpus - four bedrooms all with built-ins, main bedroom includes ensuite bathroom and walk in wardrobe, large main bathroom with corner bath and fantastic internal laundry with lots of storage.

FEATURES - Vast open plan timber kitchen with skylight, dishwasher, double sink and stainless steel appliances, dining space combines with family room, LED downlights throughout, reverse cycle ducted A/C, ceiling fans, tiled

Type : House
Price : \$ 975,000
Land Size : 1012 sqm
View : <https://www.chapmanrealestate.com.au/sale/nsw/blue-mountains-surrounds/hazelbrook/residential/house/7709447>

[For full version visit the website](#)



Claudia Hayes
02 4751 8266



Hannah Cubby
02 4751 8266

30-32 ORAMA AVENUE, HAZELBROOK



INTERNAL
226 m²

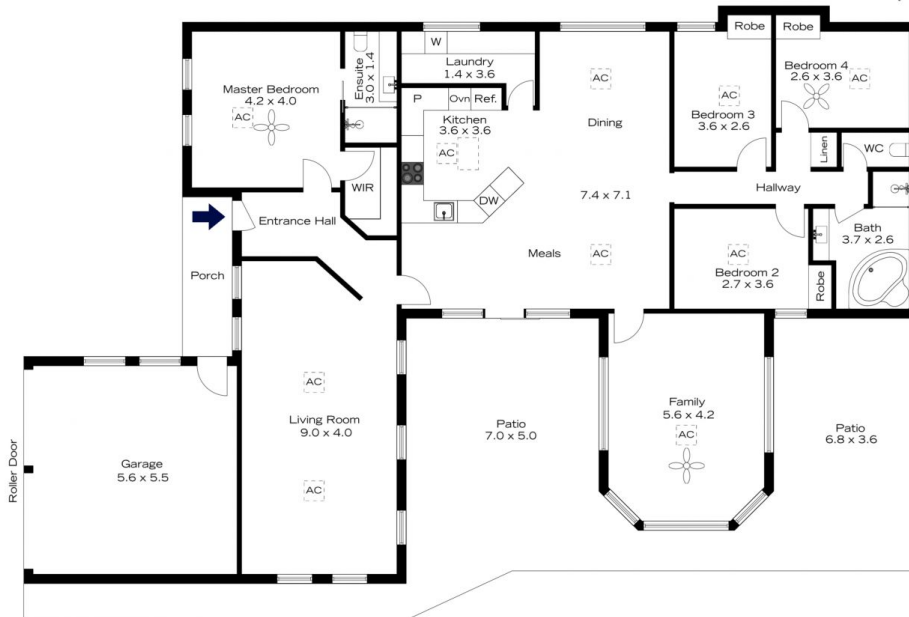
EXTERNAL
86 m²

TOTAL
312 m²



The floor plan is not to scale; measurements are indicative and in metres. All features included in this 3D plan are for inspiration purposes only. This is not an exact replica of the property or the position of exterior elements. Plans should not be relied on. Interested parties should make and rely on their own enquiries.

30-32 ORAMA AVENUE, HAZELBROOK



INTERNAL
226 m²

EXTERNAL
86 m²

TOTAL
312 m²



The floor plan is not to scale; measurements are indicative and in metres. Exterior elements are not in position. Plans should not be relied on. Interested parties should make and rely on their own enquiries.