



#### 14 Buena Vista Road Winmalee NSW

4 2 4

**LOCATION-** Quiet pocket of Winmalee backing onto bush offering abundance of privacy, within 2.6km of local schools, parks, bush walks and Winmalee Village.

**STYLE** - Rendered brick home with colour bond roof, mostly single level with views from each window.

**LAYOUT** - Open plan lounge/dining/ kitchen with feature fire place, 4 bedrooms - 3 with built in robes, 4th bed with ensuite, updated main bathroom with corner bath/ shower, floor to ceiling tiles, internal laundry with external access.

**FEATURES** - 4 year old quality kitchen, large pantry, stone bench tops, 900mm oven and 6 x stove burners, Bosch dishwasher and S/S appliances, plantation shutters, timber

**Type** : House  
**Price** : \$ 1,000,000  
**Land Size** : 1448 sqm  
**View** : <https://www.chapmanrealestate.com.au/sale/nsw/hawkesbury/winmalee/residential/house/7700163>



**Claudia Hayes**  
02 4751 8266

[For full version visit the website](https://www.chapmanrealestate.com.au)

<https://www.chapmanrealestate.com.au>

# 14 BUENA VISTA ROAD, WINMALEE



**INTERNAL**  
142 m<sup>2</sup>

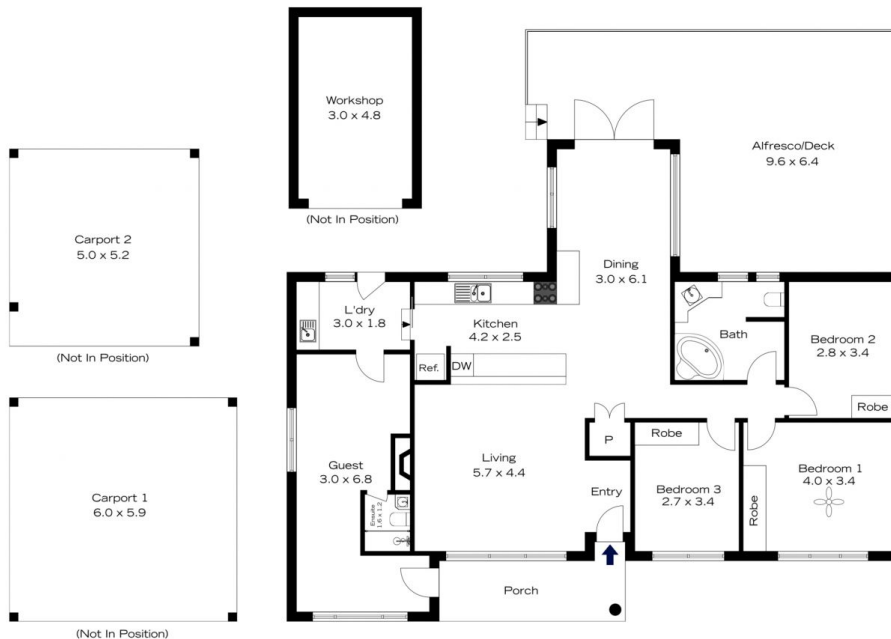
**EXTERNAL**  
57 m<sup>2</sup>

**TOTAL**  
199 m<sup>2</sup>



The floor plan is not to scale; measurements are indicative and in metres. All features included in this 3D plan are for inspiration purposes only. This is not an exact replica of the property or the position of exterior elements. Plans should not be relied on. Interested parties should make and rely on their own enquiries.

# 14 BUENA VISTA ROAD, WINMALEE



**INTERNAL**  
142 m<sup>2</sup>

**EXTERNAL**  
57 m<sup>2</sup>

**TOTAL**  
199 m<sup>2</sup>



The floor plan is not to scale; measurements are indicative and in metres. Exterior elements are not in position. Plans should not be relied on. Interested parties should make and rely on their own enquiries.