



### 21 Palena Crescent St Clair NSW

5 2 3

**LOCATION** - This property is located in a small cul de sac street in a quiet pocket of St Clair. The local shopping centre offers everything from grocery stores to restaurants, cafes and more. Schools are as close as 3kms approx. from home and access to the M4 Motorway is quick and convenient.

**STYLE** - This single level brick home is well kept throughout. The timber kitchen features granite benchtops, a breakfast bar for casual dining, and plenty of storage space. The bedrooms are carpeted, and the living spaces feature wooden flooring and tiled floors. The home has been painted a modern grey throughout and bathrooms in good condition.

**Type** : House  
**Price** : \$ 982,000  
**Land Size** : 777 sqm  
**View** : <https://www.chapmanrealestate.com.au/sale/nsw/western-sydney/st-clair/residential/house/7692694>

[For full version visit the website](https://www.chapmanrealestate.com.au)



**Chris Rayner**  
02 4739 6200



**Kate Spence**  
02 4739 6200

21 PALENA CRESCENT, ST CLAIR



INTERNAL  
209 m<sup>2</sup>

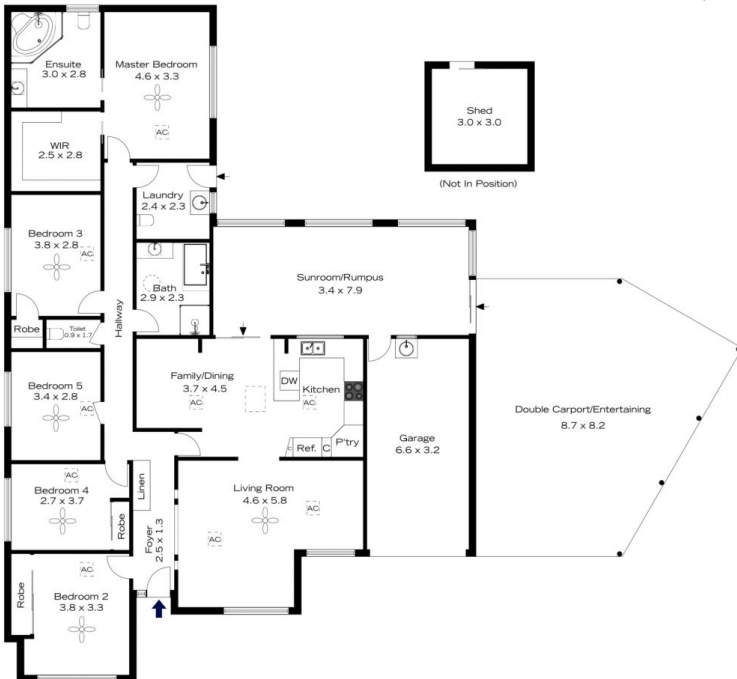
EXTERNAL  
56 m<sup>2</sup>

TOTAL  
265 m<sup>2</sup>



The floor plan is not to scale; measurements are indicative and in metres. All features included in this 3D plan are for inspiration purposes only. This is not an exact replica of the property or the position of exterior elements. Plans should not be relied on. Interested parties should make and rely on their own enquiries.

21 PALENA CRESCENT, ST CLAIR



INTERNAL  
209 m<sup>2</sup>

EXTERNAL  
56 m<sup>2</sup>

TOTAL  
265 m<sup>2</sup>



The floor plan is not to scale; measurements are indicative and in metres. Exterior elements are not in position. Plans should not be relied on. Interested parties should make and rely on their own enquiries.