



38 Tall Timbers Road Winmalee NSW

3 1 2

LOCATION - Peacefully set in a quiet pocket of Winmalee, next to reserve, close to parks, schools, transport and within 2.6km of Winmalee Shopping Village and Medical Centre.

STYLE - Beautifully renovated split level mainly brick home with tile roof, set on approximately 703 m2 block of usable spaces.

LAYOUT - 2 separate living spaces, a welcoming family room with sliding door access to outdoor entertainment area and separate large lounge & dining room with gas fireplace & feature painted brick wall, 3 double bedrooms all with built ins, flawlessly renovated central three way bathroom with double shower plus bath, heated towel rails, wall hung vanity, double glazed windows and contemporary tap ware, updated internal laundry with convenient external

Type : House
Price : \$ 891,000
Land Size : 703 sqm
View : <https://www.chapmanrealestate.com.au/sale/nsw/hawkesbury/winmalee/residential/house/7691650>

[For full version visit the website](#)



Helen Harris
02 4751 8266



Hannah Cubby
02 4751 8266

38 TALL TIMBERS ROAD, WINMALEE



INTERNAL
124 m²

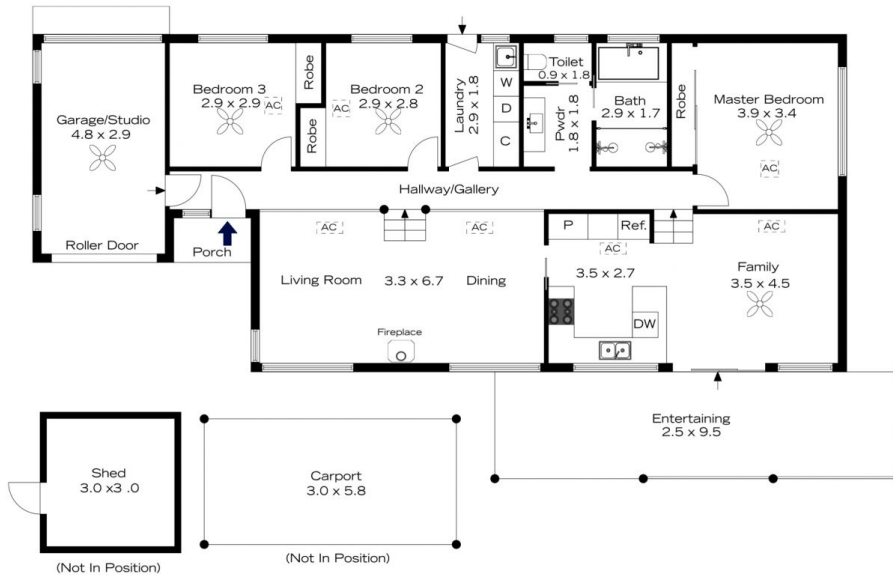
EXTERNAL
28 m²

TOTAL
152 m²



The floor plan is not to scale; measurements are indicative and in metres. All features included in this 3D plan are for inspiration purposes only. This is not an exact replica of the property or the position of exterior elements. Plans should not be relied on. Interested parties should make and rely on their own enquiries.

38 TALL TIMBERS ROAD, WINMALEE



INTERNAL
124 m²

EXTERNAL
28 m²

TOTAL
152 m²



The floor plan is not to scale; measurements are indicative and in metres. Exterior elements are not in position. Plans should not be relied on. Interested parties should make and rely on their own enquiries.