

10 Winnicoopa Road Blaxland NSW

4 2 2

LOCATION: Discover the epitome of tranquillity and modern living in this stunning, renovated two storey residence nestled on an expansive bush block. Amenities close by include - rail services, bus, public school, bush walks, supermarket, shops, restaurants, and cafes.

STYLE: Immaculately presented mountains style cottage home set on an approx 2144m² block backing to lush bushland. Immerse yourself in the breath-taking beauty and countless adventures offered by the iconic Blue Mountains, right in your backyard.

LAYOUT: 3 living areas, 4 bedrooms, (huge master), all with built-ins, 2 renovated bathrooms. This lifestyle property is not just a house; it's a haven for those seeking a harmonious blend of modern comfort and natural splendour. Whether you're unwinding in the spacious living

Type : House
Price : \$ 1,240,000
Land Size : 2144 sqm
View : <https://www.chapmanrealestate.com.au/sale/nsw/blue-mountains-surrounds/blaxland/residential/house/7685548>

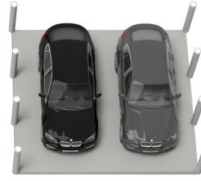


Milton Player
02 4739 4311

[For full version visit the website](https://www.chapmanrealestate.com.au)

<https://www.chapmanrealestate.com.au>

10 WINNICOOPA ROAD, BLAXLAND



Ground Floor
INTERNAL
196 m²

EXTERNAL
69 m²

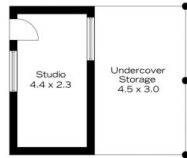
TOTAL
265 m²

The floor plan is not to scale; measurements are indicative and in metres. All features included in this 3D plan are for inspiration purposes only. This is not an exact replica of the property or the position of exterior elements. Plans should not be relied on. Interested parties should make and rely on their own enquiries.

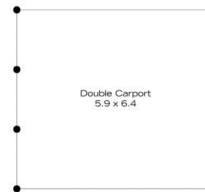


First Floor

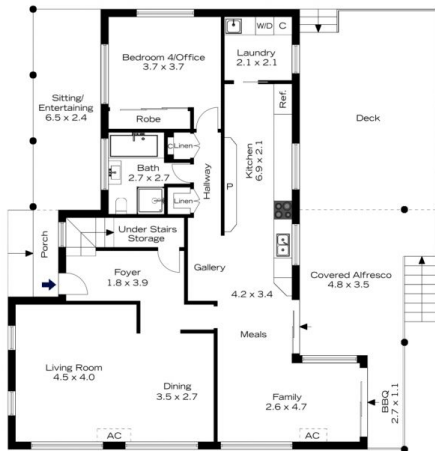
10 WINNICOOPA ROAD, BLAXLAND



(Not In Position)



(Not In Position)

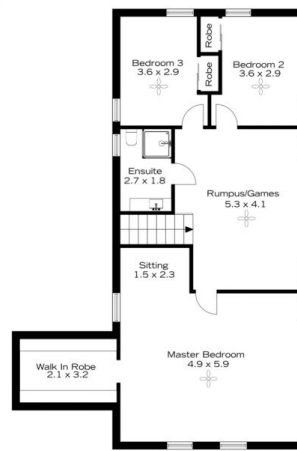


Ground Floor
INTERNAL
196 m²

EXTERNAL
69 m²

TOTAL
265 m²

The floor plan is not to scale; measurements are indicative and in metres. Exterior elements are not in position. Plans should not be relied on. Interested parties should make and rely on their own enquiries.



First Floor