



8 Surveyor Abbot Drive Glenbrook NSW

5 2 2

LOCATION - Set high in a commanding position, this majestic family home is in one of the most sought after and peaceful enclaves in the tightly held and prestigious Mt Sion area in Glenbrook. Directly opposite native bushland, this true oasis offers privacy, comfort and tranquility. Positioned on an approximate 979sqm block, you're close to bush walks, lagoon, shops, schools and public transport, with easy access to the M4 Motorway.

STYLE - This beautiful two storey brick and tile residence provides elegant family living with a stunning street appeal. Offering a quiet haven to call home, with multiple living spaces to accommodate the whole family, inground swimming pool, and surrounded by impeccably landscaped gardens, it simply is the perfect home.

LAYOUT - Open plan renovated kitchen with Caesarstone

Type : House
Price : \$ 1,500,000
Land Size : 929 sqm
View : <https://www.chapmanrealestate.com.au/sale/nsw/blue-mountains-surrounds/glenbrook/residential/house/7661181>



Sharon Lampert
02 4739 4311

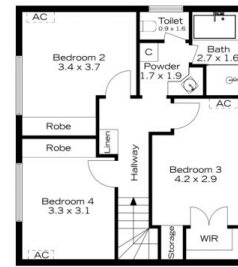
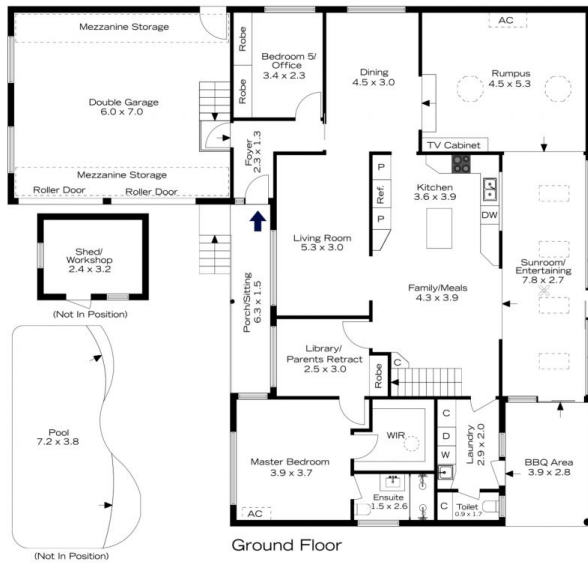


Kate Spence
02 4739 6200

[For full version visit the website](https://www.chapmanrealestate.com.au)

<https://www.chapmanrealestate.com.au>

8 SURVEYOR ABBOT DRIVE, GLENBROOK



INTERNAL
263 m²

EXTERNAL
19 m²

TOTAL
282 m²



The floor plan is not to scale; measurements are indicative and in metres. Exterior elements are not in position. Plans should not be relied on. Interested parties should make and rely on their own enquiries.

8 SURVEYOR ABBOT DRIVE, GLENBROOK



INTERNAL
263 m²

EXTERNAL
19 m²

TOTAL
282 m²



The floor plan is not to scale; measurements are indicative and in metres. All features included in this 3D plan are for inspiration purposes only. This is not an exact replica of the property or the position of exterior elements. Plans should not be relied on. Interested parties should make and rely on their own enquiries.