



6 Norman Lindsay Crescent Falconbridge NSW

5 2 2

LOCATION - This fantastic property is situated in a pristine pocket of the Blue Mountains. Springwood High is located nearby, and the Norman Lindsay Gallery is one of your closest neighbours. Surrounded by lush bushland - you will enjoy the opportunity to explore scenic bush walks, and listen to the call of the native birds in the nearby tree canopies. Falconbridge station is 5 minutes by car and access to the Great Western Highway is only 4 minutes away. Springwood CBD is less than 10 minutes by car, offering shops, cafes, pubs, clubs and more.

STYLE - This stunning retreat is the quintessential cabin in the mountains, surrounded by approximately 2.6 acres of bushland. There is a combustion fireplace in the lounge room, adding to the ambience of this light-filled

Type : House
Price : \$ 1,200,000
Land Size : 10798 sqm
View : <https://www.chapmanrealestate.com.au/sale/nsw/hawkesbury/falconbridge/residential/house/7641478>



Kate Spence
02 4739 6200



Claudia Hayes
02 4751 8266

[For full version visit the website](https://www.chapmanrealestate.com.au)

<https://www.chapmanrealestate.com.au>

6 NORMAN LINDSAY ROAD, FAULCONBRIDGE



First Floor



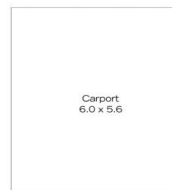
Ground Floor

INTERNAL
226 m²
EXTERNAL
64 m²
TOTAL
290 m²

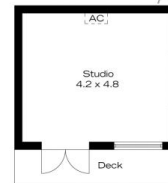


The floor plan is not to scale; measurements are indicative and in metres. All features included in this 3D plan are for inspiration purposes only. This is not an exact replica of the property or the position of exterior elements. Plans should not be relied on. Interested parties should make and rely on their own enquiries.

6 NORMAN LINDSAY ROAD, FAULCONBRIDGE



(Not In Position)



(Not In Position)
(Under Deck)



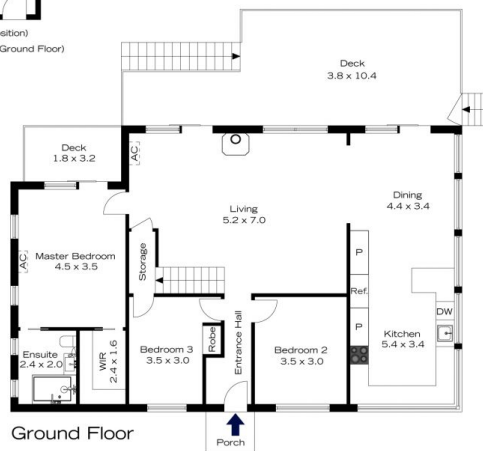
(Not In Position)
(Under Deck)



(Not In Position)
(Laundry Under Ground Floor)



First Floor



Ground Floor

INTERNAL
226 m²
EXTERNAL
64 m²
TOTAL
290 m²



The floor plan is not to scale; measurements are indicative and in metres. Exterior elements are not in position. Plans should not be relied on. Interested parties should make and rely on their own enquiries.