



## 24 Boorea Street Blaxland NSW

4 3 2

**LOCATION:** Nestled on an impressive 2007m2 (approx.) parcel of land, enjoying a picturesque backdrop of trees and wildlife, conveniently positioned in a popular location close to schools, local shops, cafes and restaurants, bus & rail services and all the Blue Mountains has to offer.

**STYLE:** Two-storey home of brick & tile construction with a beautiful parklike outlook.

**LAYOUT:** Entry level comprises of 3 good sized bedrooms, all with built in robes, family sized bathroom and ensuite to main. Light filled modern eat in kitchen overlooking rear deck and yard, great sized separate family & dining room. Downstairs offers a parents or teenage retreat area, a fourth bedroom with built in robes, good size internal

**Type** : House  
**Price** : \$ 1,260,000  
**Land Size** : 2007 sqm  
**View** : <https://www.chapmanrealestate.com.au/sale/nsw/blue-mountains-surrounds/blaxland/residential/house/7627817>

[For full version visit the website](https://www.chapmanrealestate.com.au)

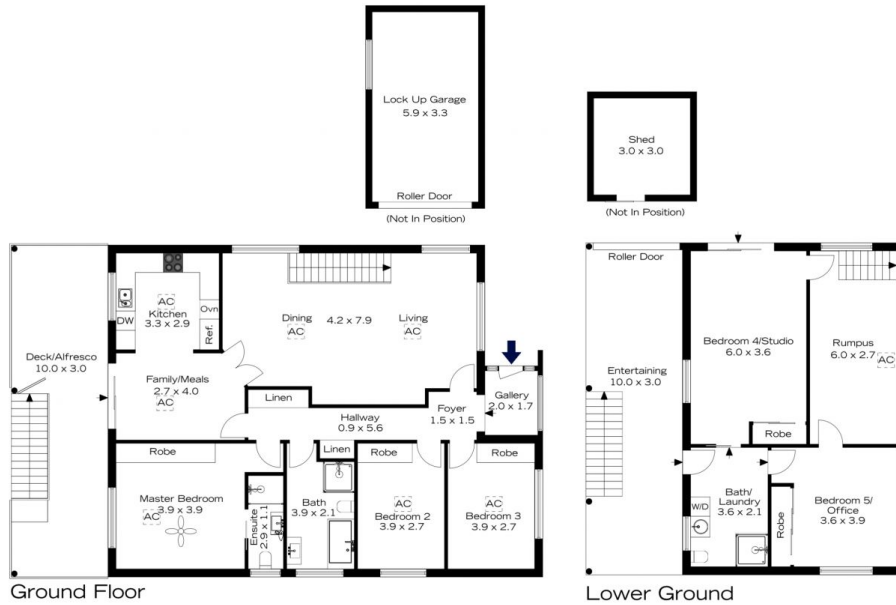


**Chris Rayner**  
02 4739 6200



**Kate Spence**  
02 4739 6200

## 24 BOOREA STREET, BLAXLAND



**INTERNAL**  
181 m<sup>2</sup>

**EXTERNAL**  
58 m<sup>2</sup>

**TOTAL**  
239 m<sup>2</sup>



The floor plan is not to scale; measurements are indicative and in metres. Exterior elements are not in position. Plans should not be relied on. Interested parties should make and rely on their own enquiries.

## 24 BOOREA STREET, BLAXLAND



**INTERNAL**  
181 m<sup>2</sup>

**EXTERNAL**  
58 m<sup>2</sup>

**TOTAL**  
239 m<sup>2</sup>



The floor plan is not to scale; measurements are indicative and in metres. All features included in this 3D plan are for inspiration purposes only. This is not an exact replica of the property or the position of exterior elements. Plans should not be relied on. Interested parties should make and rely on their own enquiries.