

68 Buena Vista Road Winmalee NSW

3 1 2

LOCATION - Prestigious and quiet location, close to schools, bus stop, Summerhayes Park, cafes and Winmalee shopping village.

STYLE - Single level renovated brick home with tile roof in a peaceful pocket of Winmalee.

LAYOUT - L- shape living room, dining, 3 bedrooms, 2 with built-ins, renovated bathroom with large spa bath.

FEATURES - Renovated caesarstone kitchen with 900mm gas cooking, waterfall island bench, double barn style sink, dishwasher, reverse cycle air conditioning, 6.6KW solar panels, high raked ceilings, polished timber floorboards, fully fenced backyard, carport/ undercover entertaining area, side access to the oversized lock-up garage.

Type : House
Price : \$ 800,000
Land Size : 777.8 sqm
View : <https://www.chapmanrealestate.com.au/sale/nsw/hawkesbury/winmalee/residential/house/7624421>



Claudia Hayes
02 4751 8266

Disclaimer:

[For full version visit the website](https://www.chapmanrealestate.com.au)

<https://www.chapmanrealestate.com.au>

68 BUENA VISTA ROAD, WINMALEE



INTERNAL
79 m²

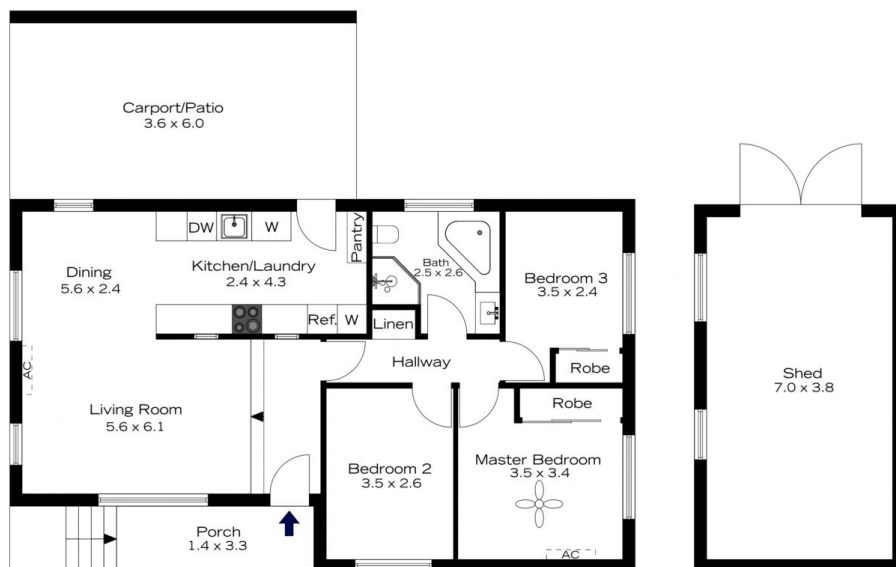
EXTERNAL
31 m²

TOTAL
110 m²



The floor plan is not to scale; measurements are indicative and in metres. All features included in this 3D plan are for inspiration purposes only. This is not an exact replica of the property or the position of exterior elements. Plans should not be relied on. Interested parties should make and rely on their own enquiries.

68 BUENA VISTA ROAD, WINMALEE



INTERNAL
79 m²

EXTERNAL
31 m²

TOTAL
110 m²



The floor plan is not to scale; measurements are indicative and in metres. Exterior elements are not in position. Plans should not be relied on. Interested parties should make and rely on their own enquiries.