



17 Paulwood Avenue Winmalee NSW

3 1

LOCATION: Tucked away in a small and quiet street, this home has easy access to Winmalee Shopping Village and Springwood Village and within walking distance to cafes, bus stop, close to schools and parks.

STYLE: Single level brick home with tile roof sitting on a large and usable 803m2. approx. block.

LAYOUT: Three bedrooms - master with built in robe, open plan lounge/ dining room with split system, original main bathroom in need of an update, internal laundry off the kitchen, undercover entertaining area looking over the large fenced yard.

FEATURES: Original kitchen with s/s sink, electric oven, stove and rangehood. This property features reverse cycle air conditioner, electric hot water, fantastic side access with potential for a large shed or granny flat (STCA). This

Type : House
Price : \$ 716,000
Land Size : 803 sqm
View : <https://www.chapmanrealestate.com.au/sale/nsw/hawkesbury/winmalee/residential/house/7624418>



Claudia Hayes
02 4751 8266

[For full version visit the website](https://www.chapmanrealestate.com.au)

17 PAULWOOD AVENUE, SPRINGWOOD

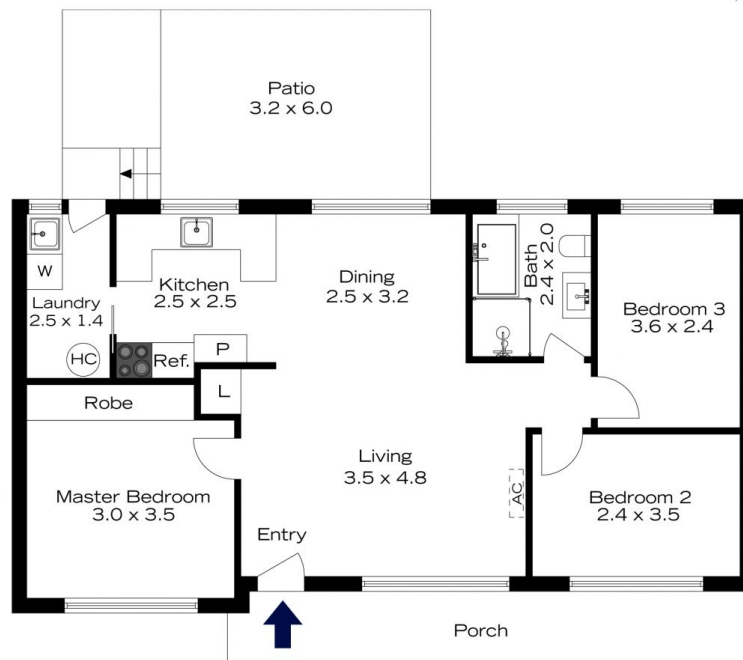


INTERNAL
84 m²
EXTERNAL
26 m²
TOTAL
110 m²



The floor plan is not to scale; measurements are indicative and in metres. All features included in this 3D plan are for inspiration purposes only. This is not an exact replica of the property or the position of exterior elements. Plans should not be relied on. Interested parties should make and rely on their own enquiries.

17 PAULWOOD AVENUE, SPRINGWOOD



INTERNAL
84 m²
EXTERNAL
26 m²
TOTAL
110 m²



The floor plan is not to scale; measurements are indicative and in metres. Exterior elements are not in position. Plans should not be relied on. Interested parties should make and rely on their own enquiries.