



12 Pitt Street Springwood NSW

3 2

LOCATION - Absolute prime position within 1km of Springwood village shops, cafe's, and train station, bus stop at door.

STYLE - Two storey cottage style home on brick foundations with colourbond roof an abundance of potential for future upgrades on a generous 1435m2 block with bush views.

LAYOUT - Upstairs to large lounge room which flows into dining area and through to family kitchen, 3 bedrooms (2 upstairs bedrooms with built in robes), original bathroom with updated shower & vanity and separate toilet, downstairs to the 3rd bedroom with small second ensuite bathroom, ideal for older children & visitors. Good size laundry, front and rear decks offering lovely outlooks both sides.

Type : House
Price : \$ 790,000
Land Size : 1435 sqm
View : <https://www.chapmanrealestate.com.au/sale/nsw/hawkesbury/springwood/residential/house/7616730>



Helen Harris
02 4751 8266



Glen Power
02 4739 4311

[For full version visit the website](https://www.chapmanrealestate.com.au)

<https://www.chapmanrealestate.com.au>

12 PITT STREET, SPRINGWOOD



Ground Floor



First Floor

INTERNAL
101 m²

EXTERNAL
71 m²

TOTAL
172 m²

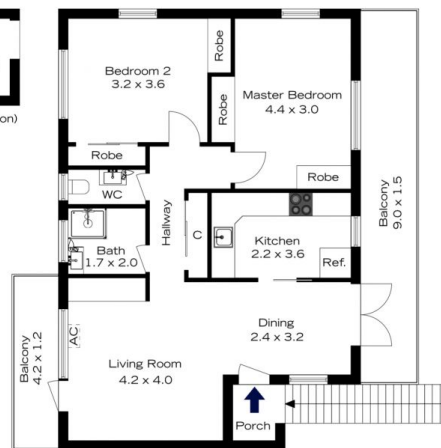


The floor plan is not to scale; measurements are indicative and in metres. All features included in this 3D plan are for inspiration purposes only. This is not an exact replica of the property or the position of exterior elements. Plans should not be relied on. Interested parties should make and rely on their own enquiries.

12 PITT STREET, SPRINGWOOD



Ground Floor



First Floor

INTERNAL
101 m²

EXTERNAL
71 m²

TOTAL
172 m²



The floor plan is not to scale; measurements are indicative and in metres. Exterior elements are not in position. Plans should not be relied on. Interested parties should make and rely on their own enquiries.