



93 Winbourne Road Hazelbrook NSW

1 1

LOCATION - Set on approx. 743sqm and looking out to the bush beyond from your rear deck, this home enjoys a lovely leafy, quiet street and is conveniently approx. 1km to local shops, cafes and train station and 450m to bus stop.

STYLE - An enticing slice of mountains living featuring a fibrous cement sheet cottage with tiled roof.

LAYOUT - This cosy home offers a large main bedroom, with built in wardrobe, that basks in the natural light from the well placed windows. Next to this a great sized renovated, crisp and modern bathroom offers separate bath and shower. Step through the hallway to the rear of the property into the kitchen and dining space that opens out to your elevated deck overlooking the impressive

Type : House
Land Size : 743 sqm
View : <https://www.chapmanrealestate.com.au/sale/nsw/blue-mountains-surrounds/hazelbrook/residential/house/7604281>



Chris Rayner
02 4739 6200



Claudia Hayes
02 4751 8266

[For full version visit the website](https://www.chapmanrealestate.com.au)

<https://www.chapmanrealestate.com.au>

93 WINBOURNE ROAD, HAZELBROOK



INTERNAL
51 m²

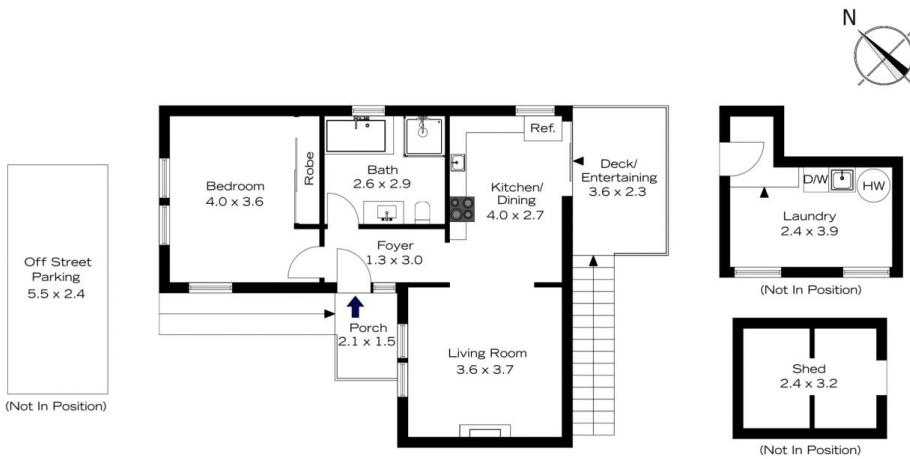
EXTERNAL
11 m²

TOTAL
62 m²



The floor plan is not to scale; measurements are indicative and in metres. All features included in this 3D plan are for inspiration purposes only. This is not an exact replica of the property or the position of exterior elements. Plans should not be relied on. Interested parties should make and rely on their own enquiries.

93 WINBOURNE ROAD, HAZELBROOK



INTERNAL
51 m²

EXTERNAL
11 m²

TOTAL
62 m²



The floor plan is not to scale; measurements are indicative and in metres. Exterior elements are not in position. Plans should not be relied on. Interested parties should make and rely on their own enquiries.