



### 75 Heather Road Winmalee NSW

3 2 2

**LOCATION** - Privately tucked away in a whisper quiet street sits this home yet within 1.1km to Winmalee village with all community amenities, local schools and 900m to bus and the popular Summerhayes Park.

**STYLE** - Beautifully renovated and much loved mostly single level brick home with tile roof with lovely established gardens with weeping cherry, lemon tree and backing onto bush with additional separate rendered double garage and workshop.

**LAYOUT** - Two light filled living spaces with stunning polished floor boards, splendid lounge with feature gas fire place flowing onto central open kitchen/dining/ lounge. 3 generous bedrooms, master with large walk in robe and

**Type** : House  
**Price** : \$ 1,040,000  
**Land Size** : 1669 sqm  
**View** : <https://www.chapmanrealestate.com.au/sale/nsw/hawkesbury/winmalee/residential/house/7577154>



**Claudia Hayes**  
02 4751 8266

[For full version visit the website](https://www.chapmanrealestate.com.au)

<https://www.chapmanrealestate.com.au>

# 75 HEATHER ROAD, WINMALEE



**INTERNAL**  
139 m<sup>2</sup>

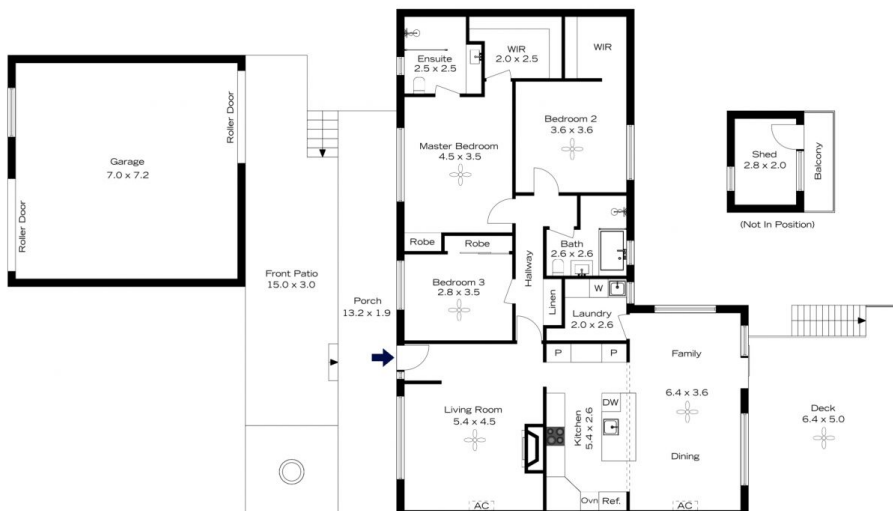
**EXTERNAL**  
97 m<sup>2</sup>

**TOTAL**  
236 m<sup>2</sup>



The floor plan is not to scale; measurements are indicative and in metres. All features included in this 3D plan are for inspiration purposes only. This is not an exact replica of the property or the position of exterior elements. Plans should not be relied on. Interested parties should make and rely on their own enquiries.

# 75 HEATHER ROAD, WINMALEE



**INTERNAL**  
139 m<sup>2</sup>

**EXTERNAL**  
97 m<sup>2</sup>

**TOTAL**  
236 m<sup>2</sup>



The floor plan is not to scale; measurements are indicative and in metres. Exterior elements are not in position. Plans should not be relied on. Interested parties should make and rely on their own enquiries.