



4 Germaine Avenue Mount Riverview NSW

3 1 3

- ? 689sqm flat, level block in family friendly neighbourhood
- ? Granny flat infrastructure - dual income potential for savvy investors
- ? North facing rear yard with solid inground pool
- ? Close to shops, schools, bus routes and Blaxland train station
- ? First time ever to market

Type : House
Price : \$ 767,500
Land Size : 683 sqm
View : <https://www.chapmanrealestate.com.au/sale/nsw/hawkesbury/mount-riverview/residential/house/7572510>

This property is packed full of potential for an astute buyer, this home features the original kitchen and beneath the carpet lies the original Blackbutt timber flooring. If extending upwards is appealing - stunning mountain views west across the Blue Mountains would be on offer.

Tucked away in a quiet and leafy nook, this home is

[For full version visit the website](#)



Kate Spence
02 4739 6200

4 GERMAINE AVENUE, MOUNT RIVERVIEW



INTERNAL
78 m²

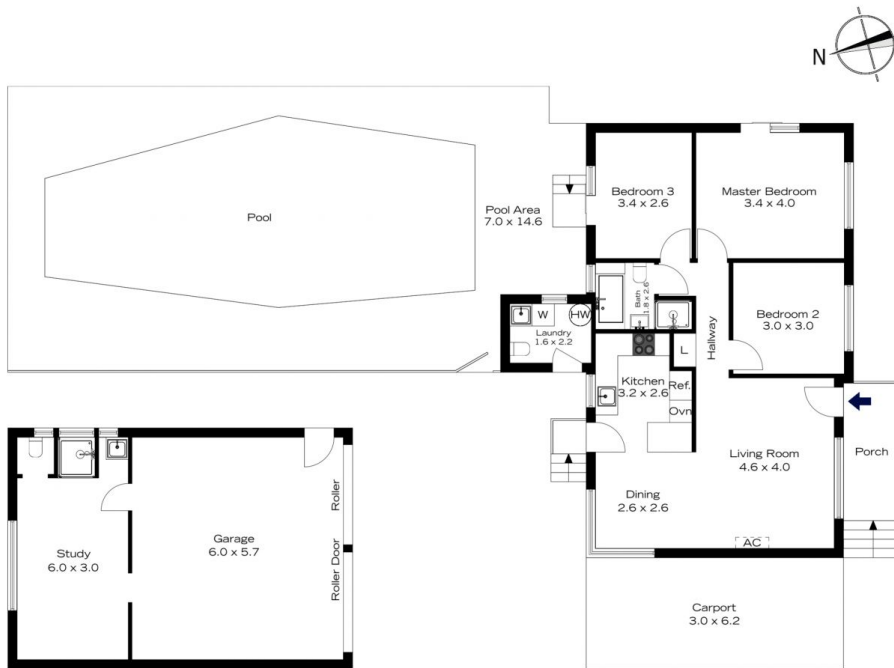
EXTERNAL
139 m²

TOTAL
217 m²



The floor plan is not to scale; measurements are indicative and in metres. All features included in this 3D plan are for inspiration purposes only. This is not an exact replica of the property or the position of exterior elements. Plans should not be relied on. Interested parties should make and rely on their own enquiries.

4 GERMAINE AVENUE, MOUNT RIVERVIEW



INTERNAL
78 m²

EXTERNAL
139 m²

TOTAL
217 m²



The floor plan is not to scale; measurements are indicative and in metres. Exterior elements are not in position. Plans should not be relied on. Interested parties should make and rely on their own enquiries.