

### 30 Hilda Street Blaxland NSW

4 2

**LOCATION** - This stunning residence is nestled away in an unbeatable location. Situated in a quiet loop road, there is a playground within 150m of this fantastic home. Shops, cafes, schools, public transport and more are all located within a few minutes drive of this gorgeous home. Bush walks and nature are at your fingertips, with plenty to do and see in the lower Blue Mountains.

**STYLE** - This picture-perfect cottage residence is the very essence of modern charm. With timber floors throughout and fresh carpet in three of the four bedrooms, this gorgeous family home has been immaculately presented. This stunning home has been completely renovated and refreshed throughout with a gorgeous wrap around kitchen featuring stainless steel appliances. Boasting concrete

**Type** : House  
**Price** : \$ 1,200,000  
**Land Size** : 564 sqm  
**View** : <https://www.chapmanrealestate.com.au/sale/nsw/blue-mountains-surrounds/blaxland/residential/house/7568622>



**Kate Spence**  
02 4739 6200

[For full version visit the website](https://www.chapmanrealestate.com.au)

<https://www.chapmanrealestate.com.au>

# 30 Hilda Street, Blaxland

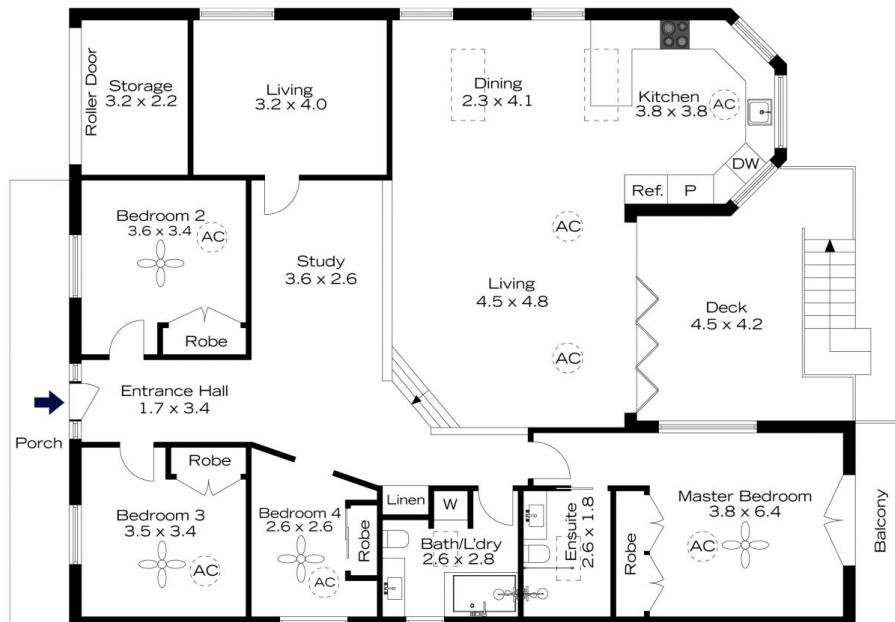


**INTERNAL**  
182 m<sup>2</sup>  
**EXTERNAL**  
34 m<sup>2</sup>  
**TOTAL**  
216 m<sup>2</sup>



The floor plan is not to scale; measurements are indicative and in metres. All features included in this 3D plan are for inspiration purposes only. This is not an exact replica of the property or the position of exterior elements. Plans should not be relied on. Interested parties should make and rely on their own enquiries.

# 30 Hilda Street, Blaxland



**INTERNAL**  
182 m<sup>2</sup>  
**EXTERNAL**  
34 m<sup>2</sup>  
**TOTAL**  
216 m<sup>2</sup>



The floor plan is not to scale; measurements are indicative and in metres. Exterior elements are not in position. Plans should not be relied on. Interested parties should make and rely on their own enquiries.