

69 Leumeah Road Woodford NSW

3 1 1

LOCATION: Set privately in a whisper quiet pocket of Woodford, approx 1.1km to bus stop, 2.4km to train station and within 4.7km to Hazelbrook Village, local schools and bush walks.

STYLE: Mostly single level brick home with tile roof and single carport sitting on a fantastic usable block of approx 695.6m2.

LAYOUT: Two living areas including the bright open plan main family/ dining room and lounge room. 3 bedrooms, master with built in robe, original main bathroom with separate toilet, internal laundry off the kitchen with external access.

Type : House
Price : \$ 762,500
Land Size : 695.6 sqm
View : <https://www.chapmanrealestate.com.au/sale/nsw/blue-mountains-surrounds/woodford/residential/house/7560992>



Claudia Hayes
02 4751 8266

[For full version visit the website](https://www.chapmanrealestate.com.au)

<https://www.chapmanrealestate.com.au>

69 LEUMEAH ROAD, WOODFORD



INTERNAL
100 m²

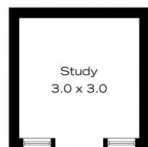
EXTERNAL
40 m²

TOTAL
140 m²



The floor plan is not to scale; measurements are indicative and in metres. All features included in this 3D plan are for inspiration purposes only. This is not an exact replica of the property or the position of exterior elements. Plans should not be relied on. Interested parties should make and rely on their own enquiries.

69 LEUMEAH ROAD, WOODFORD



(Not in Position)

INTERNAL
100 m²

EXTERNAL
40 m²

TOTAL
140 m²



The floor plan is not to scale; measurements are indicative and in metres. Exterior elements are not in position. Plans should not be relied on. Interested parties should make and rely on their own enquiries.