



7 Martin Place Faulconbridge NSW

7 2 2

LOCATION - Set proudly in a peaceful pocket of Faulconbridge, conveniently positioned a mere 500m to train, 600m to bus and only a short distance to the entrance of the Sir Henry Parkes Victory Track bush walk.

STYLE - Spacious, neat & tidy single level brick home with tile roof on large block (approx. 2460m²) with stunning bush outlook.

LAYOUT - Four living spaces, family room, large dining, separate living/media room and a generous study area, a genuine seven (yes 7!) bedrooms all (bar two) with built in robes, convenient rear yard access direct from family room, well maintained original kitchen, two bathrooms, generous central family bathroom with bath and separate toilet, and additional bathroom to service beds 5,6 & 7, laundry with an abundance of storage and external access.

Type : House
Price : \$ 1,105,188
Land Size : 2460 sqm
View : <https://www.chapmanrealestate.com.au/sale/nsw/hawkesbury/faulconbridge/residential/house/7560846>

[For full version visit the website](https://www.chapmanrealestate.com.au)



Helen Harris
02 4751 8266



Kate Spence
02 4739 6200

<https://www.chapmanrealestate.com.au>

7 MARTIN PLACE, FAULCONBRIDGE



INTERNAL
183 m²

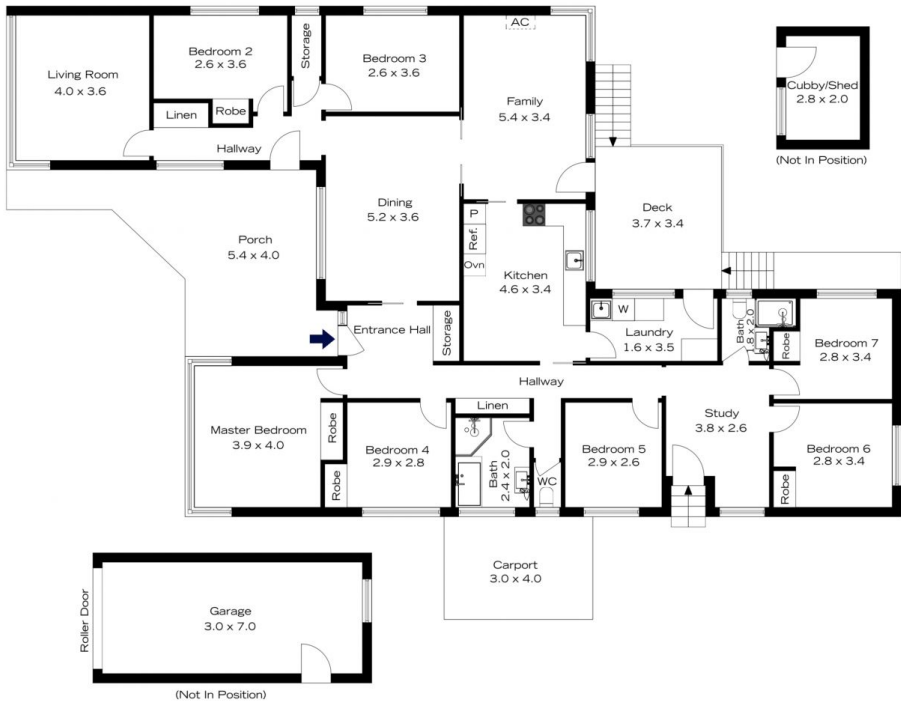
EXTERNAL
49 m²

TOTAL
232 m²



The floor plan is not to scale; measurements are indicative and in metres. All features included in this 3D plan are for inspiration purposes only. This is not an exact replica of the property or the position of exterior elements. Plans should not be relied on. Interested parties should make and rely on their own enquiries.

7 MARTIN PLACE, FAULCONBRIDGE



INTERNAL
183 m²

EXTERNAL
49 m²

TOTAL
232 m²



The floor plan is not to scale; measurements are indicative and in metres. Exterior elements are not in position. Plans should not be relied on. Interested parties should make and rely on their own enquiries.