



112a Grose Road Faulconbridge NSW

4 2 4

LOCATION - Private bush setting with breathtaking valley views, just 250m walk to high school and bus stop, within 1km of primary school, bush walks and sporting fields, a short 3km drive to the amenity of Springwood village and rail, and approx an hour drive to Sydney CBD.

STYLE - Thoughtfully designed tri-level home of double brick and steel construction with colorbond roof, masterfully positioned on the block to maximise privacy, aspect and the stunning northerly views.

LAYOUT - Three generous living spaces including formal lounge, spacious family room, and enormous loft rumpus with home office space, both formal and casual dining spaces, four great sized bedrooms (three of these with walk in wardrobes) including master suite with walk through wardrobe to renovated ensuite bathroom, light filled family bathroom and large internal laundry.

FEATURES - Timber kitchen with stunning skylight

Building Size : 300 sqm
Land Size : 4296 sqm
View : <https://www.chapmanrealestate.com.au/sale/nsw/hawkesbury/faulconbridge/residential/house/7543199>



Jonathan Crisp
02 4751 8266



Rachel Power
02 4739 4311

112 A GROSE ROAD, FAULCONBRIDGE



First Floor

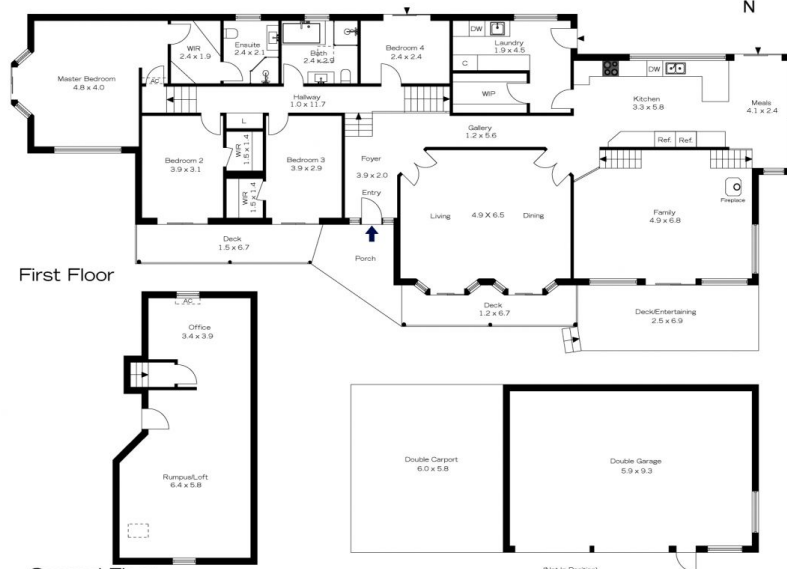
Second Floor

INTERNAL
295 m²
EXTERNAL
45 m²
TOTAL
340 m²



The floor plan is not to scale; measurements are indicative and in metres. All features included in this 3D plan are for inspiration purposes only. This is not an exact replica of the property or the position of exterior elements. Plans should not be relied on. Interested parties should make and rely on their own enquiries.

112 A GROSE ROAD, FAULCONBRIDGE



First Floor

Second Floor

INTERNAL
295 m²
EXTERNAL
45 m²
TOTAL
340 m²



The floor plan is not to scale; measurements are indicative and in metres. Exterior elements are not in position. Plans should not be relied on. Interested parties should make and rely on their own enquiries.