



22 Rickard Road Warrimoo NSW

4 2 2

LOCATION - Nestled on a tranquil landscaped flat block of approx 853.6m2 this beautifully renovated and much loved home is within 250 metres to Warrimoo Station and close proximity to Warrimoo oval, bush walks, bus stop, shops and local school.

STYLE - Single level brick home with a restored tile roof sitting on a large stunning north facing usable block.

LAYOUT - Two light filled expansive living areas includes open plan lounge and dining area, spacious living room also used as a parents retreat or possible in-law accommodation with side access, 4 bedrooms - master with stunning ensuite and walk in robe, tastefully renovated three-way main bathroom and large updated laundry with

Type	: House
Price	: \$ 1,205,000
Building Size	: 208 sqm
Land Size	: 853.6 sqm
View	: https://www.chapmanrealestate.com.au/sale/nsw/hawkesbury/warrimoo/residential/house/7531905

[For full version visit the website](#)



Claudia Hayes
02 4754 8266



Glen Power
02 4720 4244

22 RICKARD ROAD, WARRIMOO



INTERNAL
194 m²

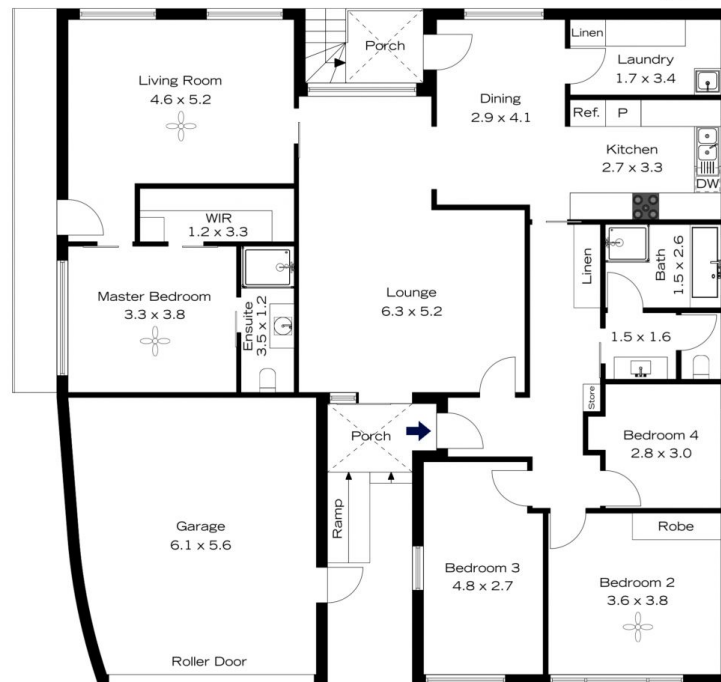
EXTERNAL
15 m²

TOTAL
209 m²



The floor plan is not to scale; measurements are indicative and in metres. All features included in this 3D plan are for inspiration purposes only. This is not an exact replica of the property or the position of exterior elements. Plans should not be relied on. Interested parties should make and rely on their own enquiries.

22 RICKARD ROAD, WARRIMOO



INTERNAL
194 m²

EXTERNAL
15 m²

TOTAL
209 m²



The floor plan is not to scale; measurements are indicative and in metres. Exterior elements are not in position. Plans should not be relied on. Interested parties should make and rely on their own enquiries.