



15-17 Martin Place Linden NSW

4 3 1

LOCATION - Positioned on a corner 668m2 (approx.) block, this four bedroom mountain cabin home is peacefully set in a leafy location yet conveniently located close enough to the train station and within a short drive either up or down the mountain to shops, schools, cafes and restaurants.

STYLE - A true Mountains gem with Hardie Plank weatherboard cladding and Colorbond roof to enhance the cabin style. Surrounded by and designed to blend with the natural rock and stone retaining walls.

LAYOUT- This home offers 4 bedrooms in total with one being on the ground floor, perfect for guests or a home study. The main bedroom on the upper level is impressive

[For full version visit the website](https://www.chapmanrealestate.com.au)

Type : House
Price : \$ 895,000
Land Size : 668 sqm
View : <https://www.chapmanrealestate.com.au/sale/nsw/blue-mountains-surrounds/linden/residential/house/7528510>



Chris Rayner
02 4739 6200



Claudia Hayes
02 4751 8266

15-17 MARTIN PLACE, LINDEN



First Floor



Ground Floor

INTERNAL
138 m²

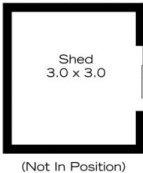
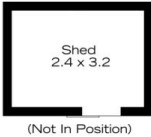
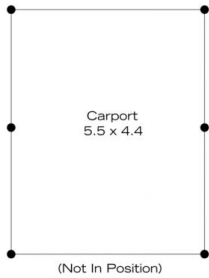
EXTERNAL
26 m²

TOTAL
164 m²



The floor plan is not to scale; measurements are indicative and in metres. All features included in this 3D plan are for inspiration purposes only. This is not an exact replica of the property or the position of exterior elements. Plans should not be relied on. Interested parties should make and rely on their own enquiries.

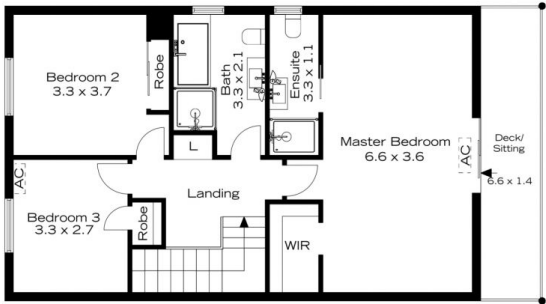
15-17 MARTIN PLACE, LINDEN



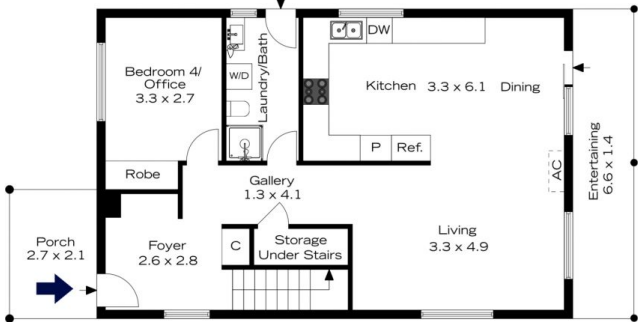
INTERNAL
138 m²

EXTERNAL
26 m²

TOTAL
164 m²



First Floor



Ground Floor



The floor plan is not to scale; measurements are indicative and in metres. Exterior elements are not in position. Plans should not be relied on. Interested parties should make and rely on their own enquiries.