

## 26 Old Bathurst Road Blaxland NSW

4 2 2

**LOCATION** - This exuberant cottage is positioned at the top end of Old Bathurst Road in Blaxland, conveniently close to shops, cafes, schools, Blaxland railway station and more. Blaxland East Public School is only 550m up the road, and East Blaxland shops offers everything from take away dining, convenience stores and hair salons, all within walking distance of this fantastic abode. Blaxland Railway Station is only a short drive from home, making commuting simple.

**STYLE** - This property has been lovingly styled with wonderful period features, antique and historic inclusions making it a completely unique property on the market. Each door and window have a story to tell, coming from different properties and added to this one to create a distinctive

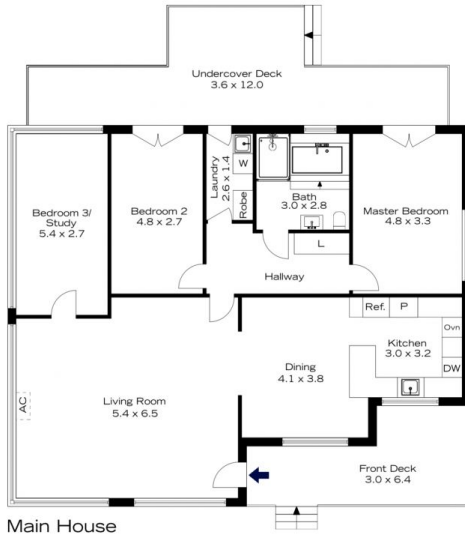
[For full version visit the website](https://www.chapmanrealestate.com.au/sale/nsw/blue-mountains-surrounds/blaxland/residential/house/7524230)

**Type** : House  
**Price** : \$ 1,280,000  
**Land Size** : 1041 sqm  
**View** : <https://www.chapmanrealestate.com.au/sale/nsw/blue-mountains-surrounds/blaxland/residential/house/7524230>

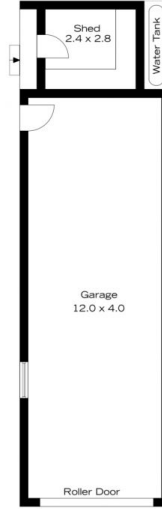


**Kate Spence**  
02 4739 6200

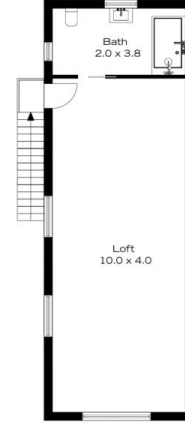
# 26 OLD BATHURST ROAD, BLAXLAND



Main House



Ground Floor



First Floor

**INTERNAL**  
179 m<sup>2</sup>

**EXTERNAL**  
47 m<sup>2</sup>

**TOTAL**  
226 m<sup>2</sup>



The floor plan is not to scale; measurements are indicative and in metres. Exterior elements are not in position. Plans should not be relied on. Interested parties should make and rely on their own enquiries.

# 26 OLD BATHURST ROAD, BLAXLAND



Main House



Ground Floor



First Floor

**INTERNAL**  
179 m<sup>2</sup>

**EXTERNAL**  
47 m<sup>2</sup>

**TOTAL**  
226 m<sup>2</sup>



The floor plan is not to scale; measurements are indicative and in metres. All features included in this 3D plan are for inspiration purposes only. This is not an exact replica of the property or the position of exterior elements. Plans should not be relied on. Interested parties should make and rely on their own enquiries.