



88 Shirlow Avenue Faulconbridge NSW

4 2 1

LOCATION - Nestled privately at the end of a quiet street in a beautiful bush setting, within 1.5km to rail and shops and 2.4km to local public school plus easy highway access both east and west.

STYLE - Original condition single level brick home with tile roof on large bush block (approx. 6456m²) with circular driveway, car port and separate workshop/storage shed.

LAYOUT - Ideal layout for the family with three large living spaces, beginning with the large enclosed sunroom, generous lounge plus open family living/dining/meals area flowing to outdoor courtyard/patio area perfect for entertaining, 4 bedrooms, master with private balcony, ensuite and walk in robe and additional three bedrooms (all with built in robes) and good size family bathroom with separate toilet convenient for all, good size laundry with

Type : House
Price : \$ 1,037,000
Land Size : 6456 sqm
View : <https://www.chapmanrealestate.com.au/sale/nsw/hawkesbury/faulconbridge/residential/house/7515250>

[For full version visit the website](https://www.chapmanrealestate.com.au)



Helen Harris
02 4751 8266



Hannah Cubby
02 4751 8266

88 SHIRLOW AVENUE, SPRINGWOOD



INTERNAL
195 m²

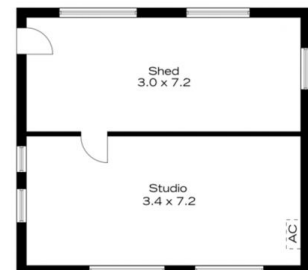
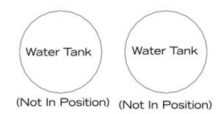
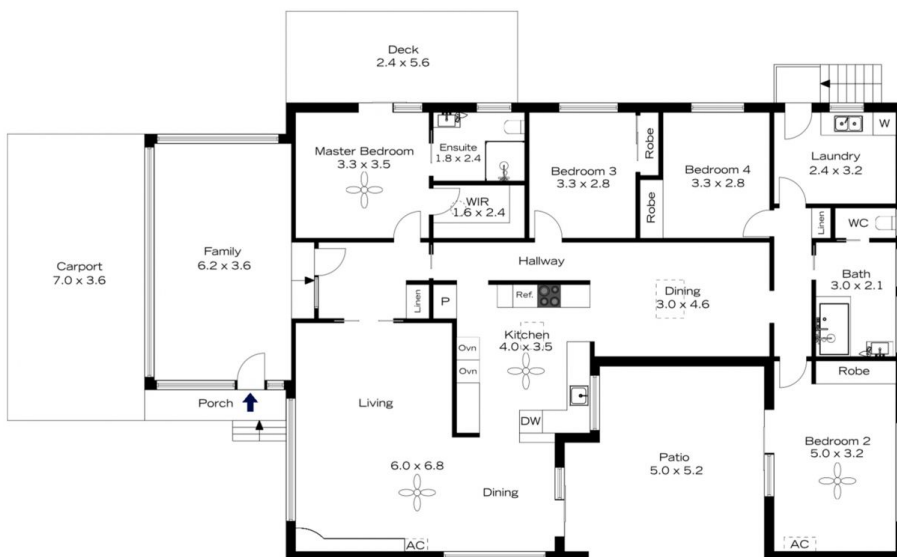
EXTERNAL
69 m²

TOTAL
264 m²



The floor plan is not to scale; measurements are indicative and in metres. All features included in this 3D plan are for inspiration purposes only. This is not an exact replica of the property or the position of exterior elements. Plans should not be relied on. Interested parties should make and rely on their own enquiries.

88 SHIRLOW AVENUE, SPRINGWOOD



INTERNAL
195 m²

EXTERNAL
69 m²

TOTAL
264 m²



The floor plan is not to scale; measurements are indicative and in metres. Exterior elements are not in position. Plans should not be relied on. Interested parties should make and rely on their own enquiries.