



22 Fairways Crescent Springwood NSW

4 3 1

LOCATION - Peaceful location, backing to glorious bushland. Close to bush walks, Golf Course, Country Club, bus, ovals, playgrounds and schools.

STYLE - Two storey brick and tile residence with magnificent bushland views, private feel and a tranquil zen vibe.

LAYOUT - 2 living rooms, dining room, 4 bedrooms (3 with built in closets), 3 bathrooms including ensuite off primary.

FEATURES - Granite kitchen with Smeg appliances, looking out to rear.

Gas log fire, ceiling fans, bay window, 2 large covered majestic decks overlooking bushland outlook, large tiered back yard, picnic vistas, garden shed, lock up garage with internal access.

Type : House
Price : \$ 910,000
Land Size : 645 sqm
View : <https://www.chapmanrealestate.com.au/sale/nsw/hawkesbury/springwood/residential/house/7513332>



Milton Player
02 4739 4311

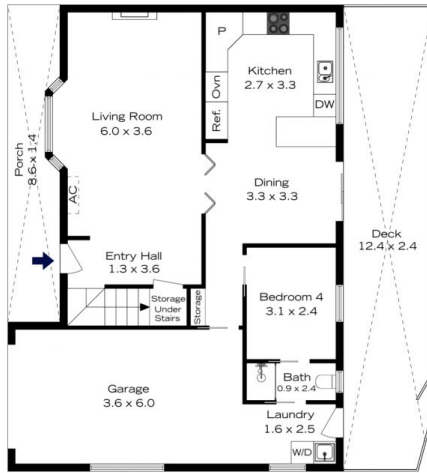


Hayley Clifton
02 4782 5045

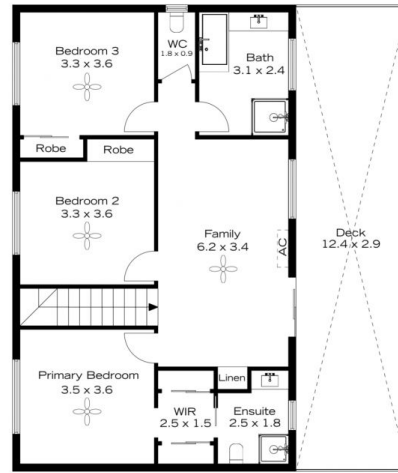
[For full version visit the website](https://www.chapmanrealestate.com.au)

<https://www.chapmanrealestate.com.au>

22 FAIRWAYS CRESCENT, SPRINGWOOD



Ground Floor



First Floor

INTERNAL
176 m²

EXTERNAL
78 m²

TOTAL
254 m²



The floor plan is not to scale; measurements are indicative and in metres. Exterior elements are not in position. Plans should not be relied on. Interested parties should make and rely on their own enquiries.

22 FAIRWAYS CRESCENT, SPRINGWOOD



Ground Floor



First Floor

INTERNAL
176 m²

EXTERNAL
78 m²

TOTAL
254 m²



The floor plan is not to scale; measurements are indicative and in metres. All features included in this 3D plan are for inspiration purposes only. This is not an exact replica of the property or the position of exterior elements. Plans should not be relied on. Interested parties should make and rely on their own enquiries.