



8 Explorers Road Glenbrook NSW

5 🛏 2 🚗 3 🚗

More photos and video available on request

LOCATION - Enjoying gorgeous Mountain views with breathtaking sunsets. Nestled on an unheralded and very useable approx 2709 sq m block. Extremely rare Lower Eastside location, within a short stroll to Village shops, restaurants, cafes, cinema, oval, children's playground, tennis courts, bus, schools and rail services.

STYLE - Iconic turn of the century homestead in the heart of the village, exuding stunning architecture and timeless elegance. Elevated position to maximise the distant bushland views and set on one of the largest and grandest blocks in the Village. Complete the extension or continue the renovation, and create one of the Crown Jewels of Glenbrook worthy of a designer magazine.

Type : House

Price : \$ 3,000,323

View : <https://www.chapmanrealestate.com.au/sale/nsw/blue-mountains-surrounds/glenbrook/residential/house/7505195>



Milton Player
02 4739 4311

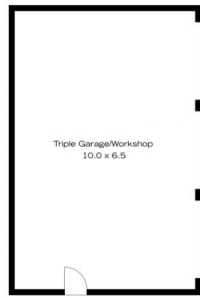


Kate Spence
02 4739 6200

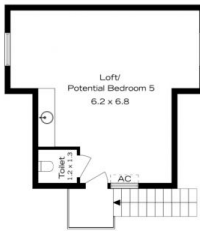
[For full version visit the website](https://www.chapmanrealestate.com.au)

<https://www.chapmanrealestate.com.au>

8 EXPLORERS ROAD, GLENBROOK



(Not in Position)

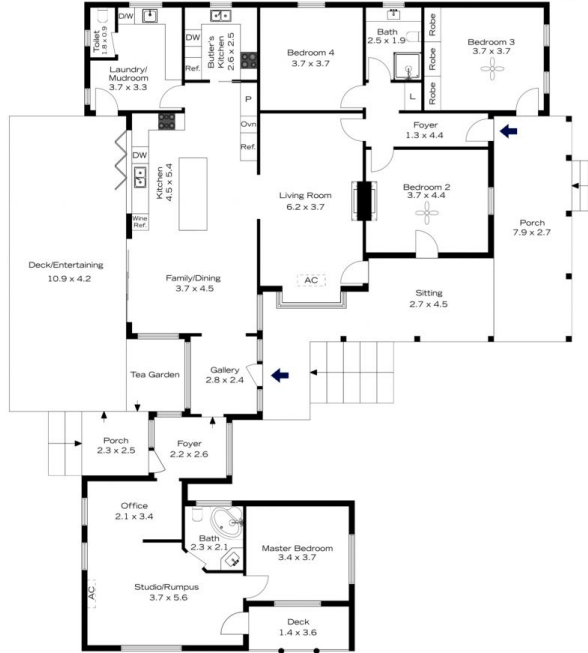


First Floor
INTERNAL
237 m²

EXTERNAL
108 m²

TOTAL
345 m²

The floor plan is not to scale; measurements are indicative and in metres. Exterior elements are not in position. Plans should not be relied on. Interested parties should make and rely on their own enquiries.



Ground Floor



8 EXPLORERS ROAD, GLENBROOK



First Floor
INTERNAL
237 m²

EXTERNAL
108 m²

TOTAL
345 m²

The floor plan is not to scale; measurements are indicative and in metres. All features included in this 3D plan are for inspiration purposes only. This is not an exact replica of the property or the position of exterior elements. Plans should not be relied on. Interested parties should make and rely on their own enquiries.



Ground Floor

