



24 Clissold Street Katoomba NSW

2 1 2

LOCATION - This classic mountain cottage enjoys a peaceful, quiet location and is just a short 400m stroll to Katoomba Town Centre. This home is set on a desirable street surrounded by leafy gardens and mature trees.

STYLE - Loaded with character and charm this property boasts high ornate ceilings, picture rails, sash windows and wooden floors.

LAYOUT - The front porch welcomes you to this beautiful home, leading into the spacious family room which has access to the two generous bedrooms. At the heart of the home is the living/dining room which opens to the sunroom (3rd bedroom). Good sized light filled kitchen with meals area leading out onto the generous undercover balcony overlooking the garden. Main bathroom with shower and toilet. In addition you have the laundry, large storage area

Type : House
Land Size : 537 sqm
View : <https://www.chapmanrealestate.com.au/sale/nsw/blue-mountains-surrounds/katoomba/residential/house/7486646>



Hayley Clifton
02 4782 5045

[For full version visit the website](https://www.chapmanrealestate.com.au)

<https://www.chapmanrealestate.com.au>

24 CLISSOLD STREET, KATOOMBA



INTERNAL
161 m²

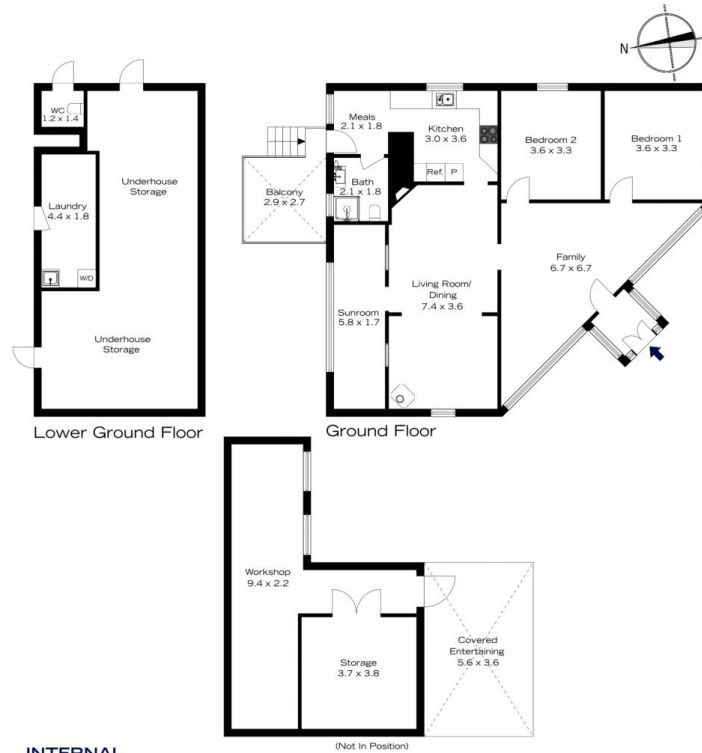
EXTERNAL
9 m²

TOTAL
170 m²



The floor plan is not to scale; measurements are indicative and in metres. All features included in this 3D plan are for inspiration purposes only. This is not an exact replica of the property or the position of exterior elements. Plans should not be relied on. Interested parties should make and rely on their own enquiries.

24 CLISSOLD STREET, KATOOMBA



INTERNAL
161 m²

EXTERNAL
9 m²

TOTAL
170 m²



The floor plan is not to scale; measurements are indicative and in metres. Exterior elements are not in position. Plans should not be relied on. Interested parties should make and rely on their own enquiries.