



601A Great Western Highway Faulconbridge NSW

4 2 2

ACCESS: Behind Community Hall on Home Street, through side gate for inspections.

LOCATION: Setting back on a battle-axe block of approx 1,098 sqm backing to bush reserve and with rear lane pedestrian access to Browett Park and Home Street this home is within 200m to train station, parks and walking distance to cafés, schools and bush walks.

STYLE: Modern renovated single level brick home and tile roof offers a spacious and relaxed lifestyle.

LAYOUT: Boasting open plan living at its finest, bright large rumpus/ games room over looking the backyard and bush views, formal dining/ activity room or office, central kitchen adjacent to family and dining room, plus a media room. 4 bedrooms - 2 with built in robes, main with walk-in robe and

Type : House
Price : \$ 1,000,000
Land Size : 1098 sqm
View : <https://www.chapmanrealestate.com.au/sale/nsw/hawkesbury/faulconbridge/residential/house/7485490>

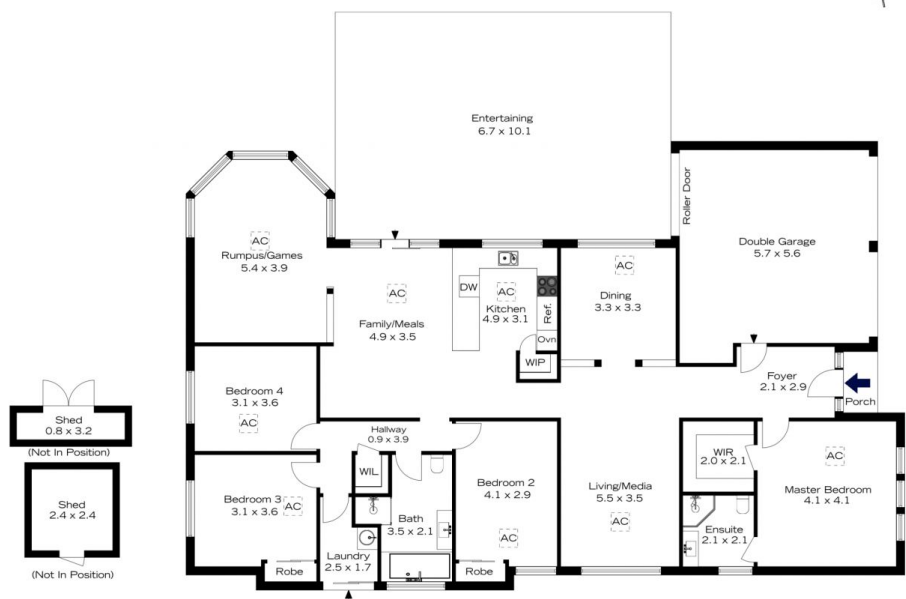


Claudia Hayes
02 4751 8266

[For full version visit the website](https://www.chapmanrealestate.com.au)

<https://www.chapmanrealestate.com.au>

601A GREAT WESTERN HIGHWAY, FAULCONBRIDGE



INTERNAL
216 m²

EXTERNAL
68 m²

TOTAL
284 m²



The floor plan is not to scale; measurements are indicative and in metres. Exterior elements are not in position. Plans should not be relied on. Interested parties should make and rely on their own enquiries.

601A GREAT WESTERN HIGHWAY, FAULCONBRIDGE



INTERNAL
216 m²

EXTERNAL
68 m²

TOTAL
284 m²



The floor plan is not to scale; measurements are indicative and in metres. All features included in this 3D plan are for inspiration purposes only. This is not an exact replica of the property or the position of exterior elements. Plans should not be relied on. Interested parties should make and rely on their own enquiries.