



25 Boorea Street Blaxland NSW

4 2 4

LOCATION - High set and well positioned on a 717m2 (approx.) block, this beautiful four bedroom cottage is just moments to all you need. Located within a short stroll to rail services, shops, restaurants, primary and pre-schools, park, supermarket and bus all within an easy 1km (approx.) distance.

STYLE- Seamless combination of modern sophistication with old style character, is this lovely weatherboard cladded cottage with Colorbond roof.

LAYOUT- An easy flow floorplan comprises of 4 bedrooms plus study or sunroom, two bathrooms, modern kitchen and multiple living areas, undercover outdoor entertaining, alfresco area, two garages, carport and so much more!

[For full version visit the website](https://www.chapmanrealestate.com.au)

Type : House
Price : \$ 1,070,000
Land Size : 717 sqm
View : <https://www.chapmanrealestate.com.au/sale/nsw/blue-mountains-surrounds/blaxland/residential/house/7484415>



Chris Rayner
02 4739 6200



Sarah Watson
02 4739 4311

25 BOOREA STREET, BLAXLAND



INTERNAL
152 m²

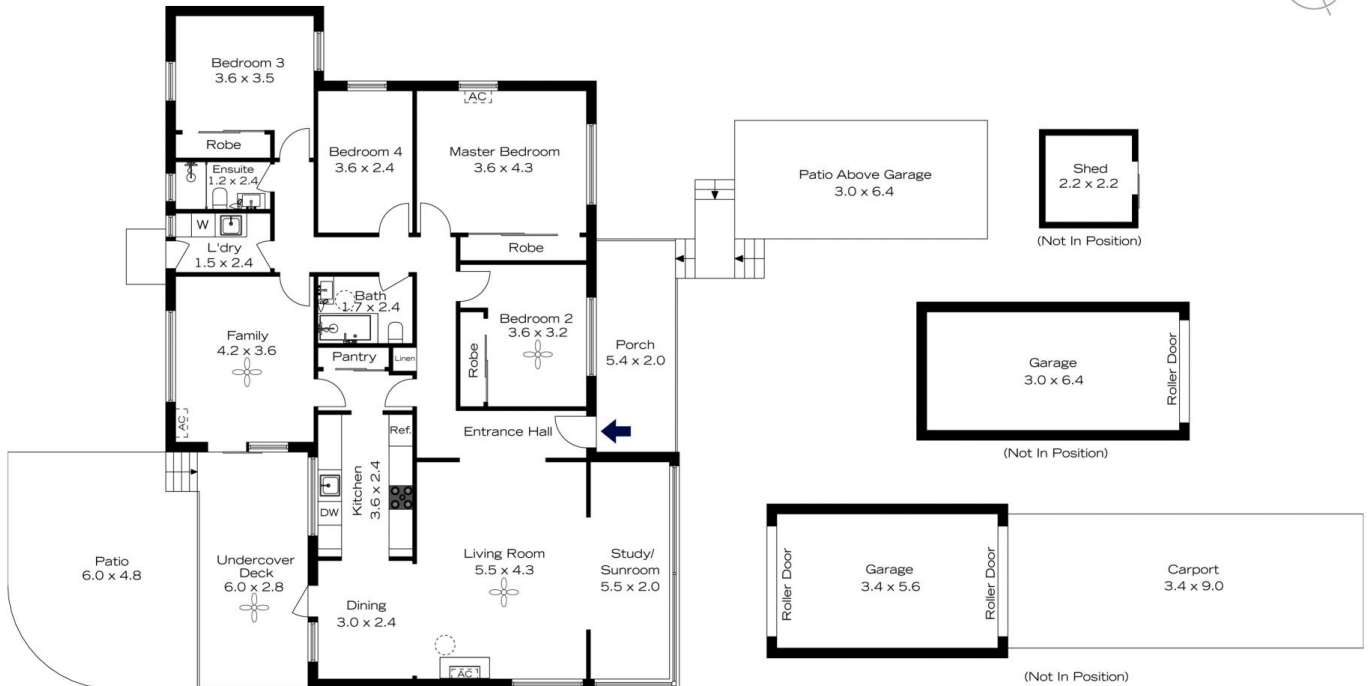
EXTERNAL
75 m²

TOTAL
227 m²

The floor plan is not to scale; measurements are indicative and in metres. All features included in this 3D plan are for inspiration purposes only. This is not an exact replica of the property or the position of exterior elements. Plans should not be relied on. Interested parties should make and rely on their own enquiries.



25 BOOREA STREET, BLAXLAND



INTERNAL
152 m²

EXTERNAL
75 m²

TOTAL
227 m²

The floor plan is not to scale; measurements are indicative and in metres. Exterior elements are not in position. Plans should not be relied on. Interested parties should make and rely on their own enquiries.

