



## 79 Rusden Road Mount Riverview NSW

4 2 1

**LOCATION** - Positioned in a highly sought after location, shops, parks, school, daycare and cafes are all within walking distance (approx 1km). There is quick and easy access to public transport and local bush walks on your doorstep.

**STYLE** - Split level rendered brick home nestled on a level 695m<sup>2</sup> block (approx).

**LAYOUT:** Four generously proportioned bedrooms, two living rooms, dining room, sun-lit kitchen overlooking the lovingly maintained garden & pool, three bathrooms (two with corner spa baths & separate showers) & laundry.

**FEATURES:** Galley-style kitchen with ample storage space, downlights, ceiling fans throughout, two split system reverse cycle air conditioning units, heater in master, en-suite (toilet & hand basin) to second bedroom, light,

**Type** : House  
**Price** : \$ 830,000  
**Land Size** : 695.6 sqm  
**View** : <https://www.chapmanrealestate.com.au/sale/nsw/hawkesbury/mount-riverview/residential/house/7459819>

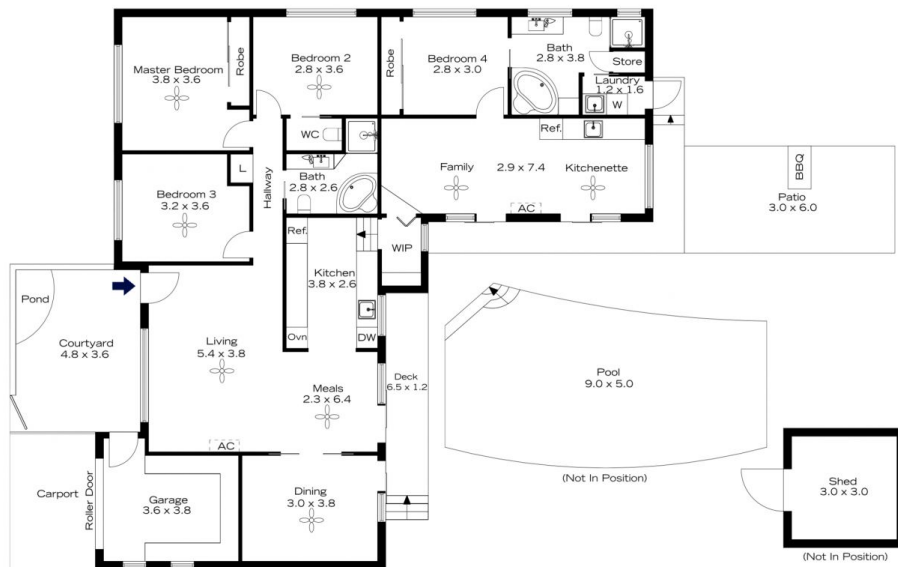


**Sarah Watson**  
02 4739 4311

[For full version visit the website](https://www.chapmanrealestate.com.au)

<https://www.chapmanrealestate.com.au>

## 79 RUSDEN ROAD, MOUNT RIVERVIEW



**INTERNAL**  
156 m<sup>2</sup>

**EXTERNAL**  
64 m<sup>2</sup>

**TOTAL**  
220 m<sup>2</sup>



The floor plan is not to scale; measurements are indicative and in metres. Exterior elements are not in position. Plans should not be relied on. Interested parties should make and rely on their own enquiries.

## 79 RUSDEN ROAD, MOUNT RIVERVIEW



**INTERNAL**  
156 m<sup>2</sup>

**EXTERNAL**  
64 m<sup>2</sup>

**TOTAL**  
220 m<sup>2</sup>



The floor plan is not to scale; measurements are indicative and in metres. All features included in this 3D plan are for inspiration purposes only. This is not an exact replica of the property or the position of exterior elements. Plans should not be relied on. Interested parties should make and rely on their own enquiries.