



64 Cliff Drive Katoomba NSW

3 1 3

LOCATION: Positioned on the high side of the street in an extremely sought after location on Cliff drive, this sensational property enjoys a peaceful setting, yet is still close to the iconic Echo point and the Three Sisters. Katoomba town with all its shops, cafes & restaurants, local schools, parks, rail & world class Blue Mountains bushwalks all within 1.4km.

STYLE: This stunning home is finished with weatherboard and a Colourbond roof, it benefits from a large single lock up garage and carport all set on a generous block of 1012m2(approx.)

LAYOUT: 3 good sized bedrooms, family bathroom, open plan kitchen and dining which has a nice connection to the lounge area and sun room, 2 balconies, large laundry leading out to the back garden. The single garage, carport

Type : House
Price : \$ 1,100,000
Land Size : 1012 sqm
View : <https://www.chapmanrealestate.com.au/sale/nsw/blue-mountains-surrounds/katoomba/residential/house/7453381>



Hayley Clifton
02 4782 5045

[For full version visit the website](https://www.chapmanrealestate.com.au)

<https://www.chapmanrealestate.com.au>

64 CLIFF DRIVE, KATOOMBA



INTERNAL
144 m²

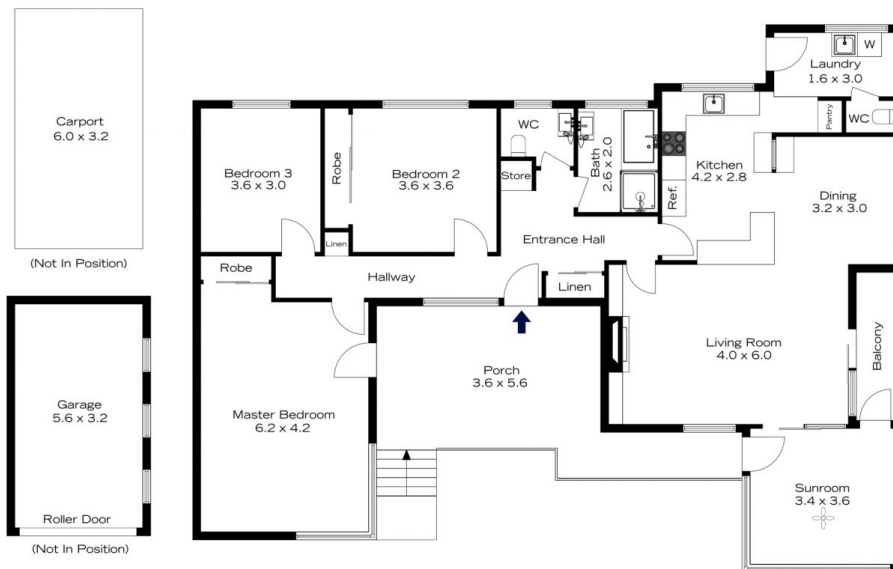
EXTERNAL
25 m²

TOTAL
169 m²



The floor plan is not to scale; measurements are indicative and in metres. All features included in this 3D plan are for inspiration purposes only. This is not an exact replica of the property or the position of exterior elements. Plans should not be relied on. Interested parties should make and rely on their own enquiries.

64 CLIFF DRIVE, KATOOMBA



INTERNAL
144 m²

EXTERNAL
25 m²

TOTAL
169 m²



The floor plan is not to scale; measurements are indicative and in metres. Exterior elements are not in position. Plans should not be relied on. Interested parties should make and rely on their own enquiries.