

6 Terrymont Road Warrimoo NSW

3 2 1

LOCATION - This quintessential Mountains cottage is nestled in a quiet cul-de-sac within walking distance to public transport. Warrimoo Station is 160m away making commuting to the city a breeze. Schools are only a few minutes drive away, and shops, cafes and restaurants are all a stone's throw away. Access to the Great Western Highway is efficient, leading to all of your favourite Blue Mountains townships.

STYLE - Packed with character and charm, this three bedroom residence is surrounded by lush greenery with a bush landscape right on your back doorstep. This cottage style home features timber flooring throughout with carpet in the bedrooms. The kitchen is in fantastic condition and boasts plenty of storage space, as well as a gas cooktop,

[For full version visit the website](#)

Type : House
Price : \$ 871,000
Land Size : 1171 sqm
View : <https://www.chapmanrealestate.com.au/sale/nsw/hawkesbury/warrimoo/residential/house/7453138>



Kate Spence
02 4739 6200

6 TERRYMONT ROAD, WARRIMOO



INTERNAL
109 m²

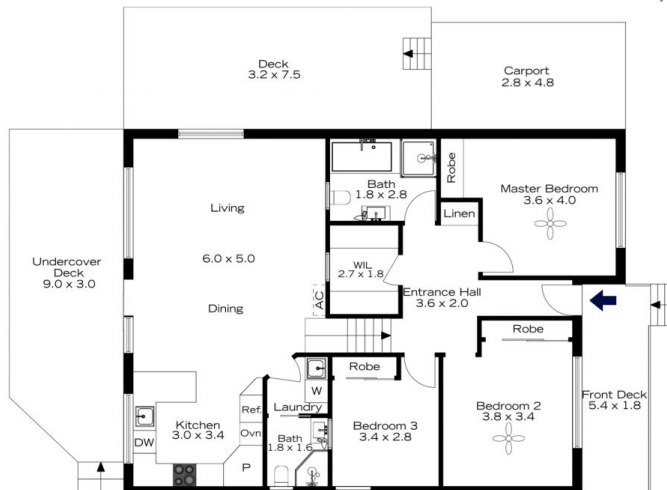
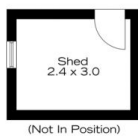
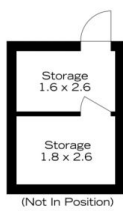
EXTERNAL
72 m²

TOTAL
181 m²



The floor plan is not to scale; measurements are indicative and in metres. All features included in this 3D plan are for inspiration purposes only. This is not an exact replica of the property or the position of exterior elements. Plans should not be relied on. Interested parties should make and rely on their own enquiries.

6 TERRYMONT ROAD, WARRIMOO



INTERNAL
109 m²

EXTERNAL
72 m²

TOTAL
181 m²



The floor plan is not to scale; measurements are indicative and in metres. Exterior elements are not in position. Plans should not be relied on. Interested parties should make and rely on their own enquiries.