



### 194 Hawkesbury Road Winmalee NSW

3 1 1

**LOCATION** - Conveniently located within 200m of schools and bus stop, 750m to convenience store and within 2km of golf course, dog park, Summerhayes sporting fields and popular coffee shop.

**STYLE** - Single level home of brick construction and tile roof, beautifully renovated throughout in a gorgeous contemporary style.

**LAYOUT** - Spacious lounge and dining room, three bedrooms all with ducted air conditioning and built in wardrobes, stunning bathroom with heated floors, flow through from kitchen to outdoor space and internal European laundry with stone benches.

**FEATURES** - Stylish new Kingsman kitchen with Smeg 900mm Victoria oven and ducted rangehood, caesarstone benches and Bosch dishwasher, three zone ducted reverse

**Type** : House  
**Price** : \$ 880,000  
**Land Size** : 695.6 sqm  
**View** : <https://www.chapmanrealestate.com.au/sale/nsw/hawkesbury/winmalee/residential/house/7451364>



**Mark Poole**  
02 4751 8266



**Claudia Hayes**  
02 4751 8266

[For full version visit the website](https://www.chapmanrealestate.com.au)

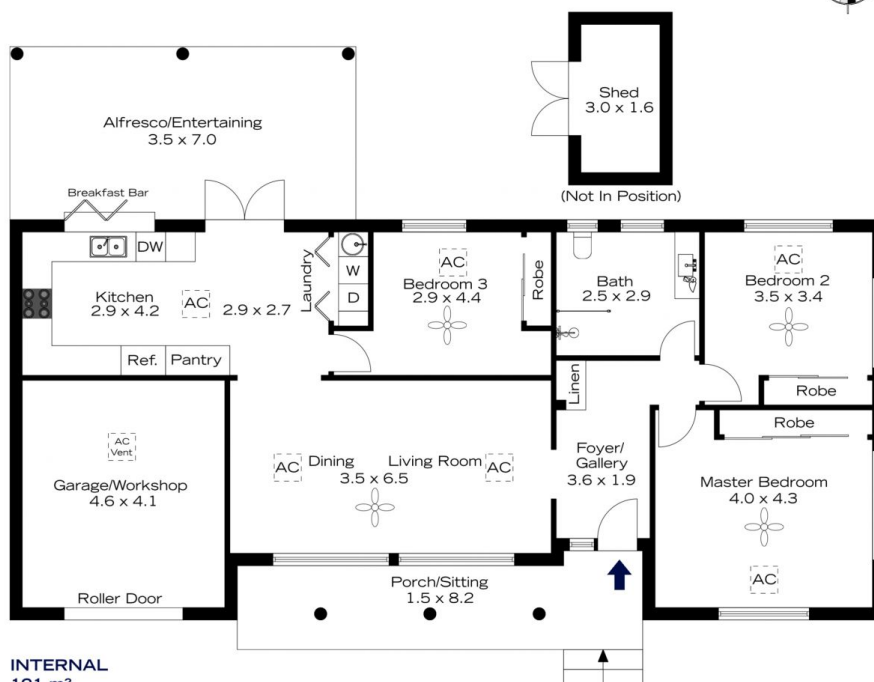
<https://www.chapmanrealestate.com.au>



TOTAL  
160 m<sup>2</sup>



The floor plan is not to scale; measurements are indicative and in metres. All features included in this 3D plan are for inspiration purposes only. This is not an exact replica of the property or the position of exterior elements. Plans should not be relied on. Interested parties should make and rely on their own enquiries.



**TOTAL**  
**160 m<sup>2</sup>**



The floor plan is not to scale; measurements are indicative and in metres. Exterior elements are not in position. Plans should not be relied on. Interested parties should make and rely on their own enquiries.