



72 Falls Road Wentworth Falls NSW

3 1 1

LOCATION - Set in one of the most sought after locations in the Blue Mountains, surrounded by Blue Ribbon Properties. Walk to local lookouts, bush walks, Central and Murray park (with a gorgeous oval), Falls Gallery, National Park, Flat Rock Falls, local cafe with views, renowned Wentworth Falls Public school, Tennis club, Charles Darwin walk with children's playground and park, Blue Mountains Grammar School, bus, shops, restaurants, local hotel, and rail.

STYLE - Level 919 sq m block (width 20.11m by 45.72m). Single level Mountains cottage with character feel. Loads of potential - keep as is, renovate, extend, or knock down re-build your dream home.

LAYOUT - Living room, 3 bedrooms, built-in robes to 2, bathroom with separate shower and bath.

[For full version visit the website](https://www.chapmanrealestate.com.au)

Type : House
Price : \$ 820,000
Land Size : 916.9 sqm
View : <https://www.chapmanrealestate.com.au/sale/nsw/blue-mountains-surrounds/wentworth-falls/residential/house/7449922>



Milton Player
02 4739 4311

72 FALLS ROAD, WENTWORTH FALLS



INTERNAL
73 m²

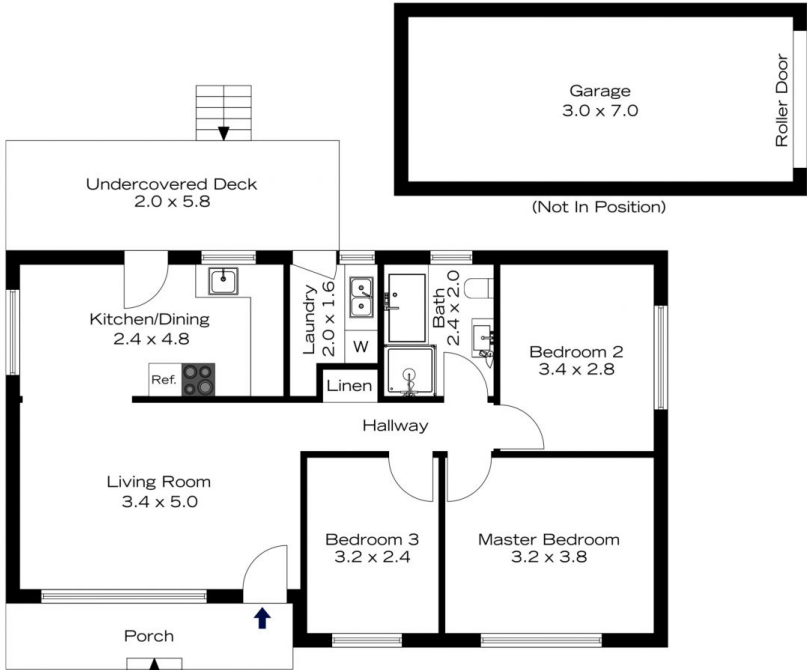
EXTERNAL
18 m²

TOTAL
91 m²



The floor plan is not to scale; measurements are indicative and in metres. All features included in this 3D plan are for inspiration purposes only. This is not an exact replica of the property or the position of exterior elements. Plans should not be relied on. Interested parties should make and rely on their own enquiries.

72 FALLS ROAD, WENTWORTH FALLS



INTERNAL
73 m²

EXTERNAL
18 m²

TOTAL
91 m²



The floor plan is not to scale; measurements are indicative and in metres. Exterior elements are not in position. Plans should not be relied on. Interested parties should make and rely on their own enquiries.