



**2 Dora Street Katoomba NSW**

2 2 2

**LOCATION** - Central Katoomba with easy access to World Heritage listed national park, Katoomba village & the vibrant restaurant & cafe scene, arts & culture, rail, bus, Katoomba Hospital & the Great Western Highway.

**STYLE** - Brand new luxury townhouses redefining expectations of living and setting a new standard for homes in Katoomba and the Blue Mountains region.

**LAYOUT** - These luxury townhouses, finished to a high quality are homes of generous proportions comprising 2-bedroom, 2 bathrooms plus study, Single lock up garage and additional car park at front on townhome, light filled open plan living area opening out to the garden.

**FEATURES** - Designed by award winning team Integrated Design Group to allow spectacular facades, vaulted

**Price** : \$789,000 - \$849,000

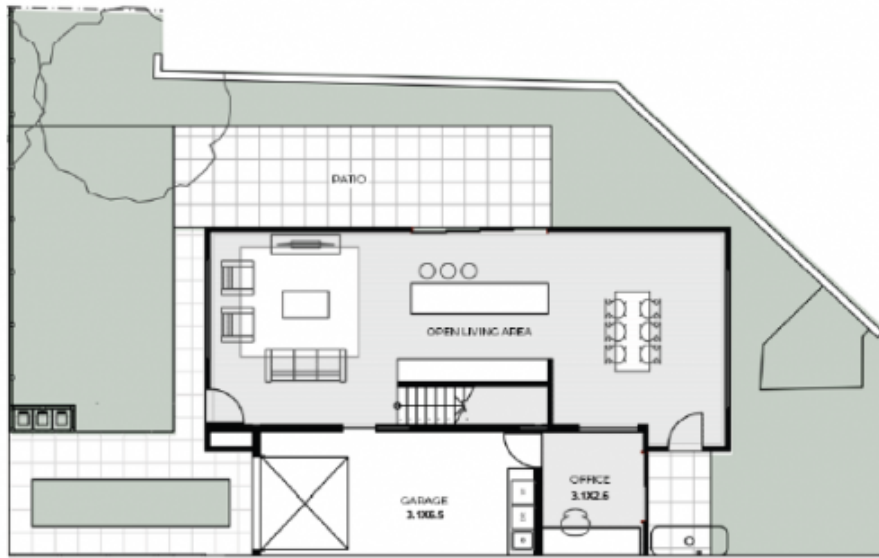
**View** : <https://www.chapmanrealestate.com.au/sale/nsw/blue-mountains-surrounds/katoomba/residential/townhouse/7443106>



**Jonathan Crisp**  
02 4751 8266



**Hayley Clifton**  
02 4782 5045

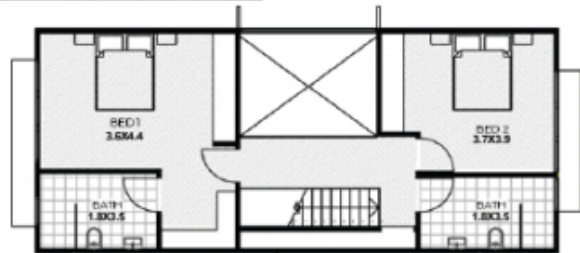


## UNIT 12

2 Bed / 2 Bath / 2 Car

153m<sup>2</sup> internal floor space

318m<sup>2</sup> overall



Disclaimer: Unit areas are just estimates and are to be used as a guide only. Dimensions, areas, fittings and fixtures are subject to change and adjustment during the course of construction