



7 The Valley Road Valley Heights NSW

2 1 1

LOCATION: Convenient location with easy access to the Great Western Highway, train station, bus stop, local parks, schools and within 2.5km to Springwood Village.

STYLE: Single level cottage with metal roof sitting on a flat and usable 455.3m² block.

LAYOUT: Lovely lounge room with a feature fire place, 2 bedrooms plus a study/office, internal laundry flows onto the shower and sink, handy separate powder room.

FEATURES: Large updated kitchen with lots of bench space, gas cook top, double sink and meals area. Original features throughout awaiting your personal touch, bottled gas connected, fully fenced rear yard with a great size

Type : House
Price : \$ 600,001
Land Size : 455.3 sqm
View : <https://www.chapmanrealestate.com.au/sale/nsw/hawkesbury/valley-heights/residential/house/7443105>



Claudia Hayes
02 4751 8266

[For full version visit the website](https://www.chapmanrealestate.com.au)

<https://www.chapmanrealestate.com.au>

7 THE VALLEY ROAD, VALLEY HEIGHTS



INTERNAL
68 m²

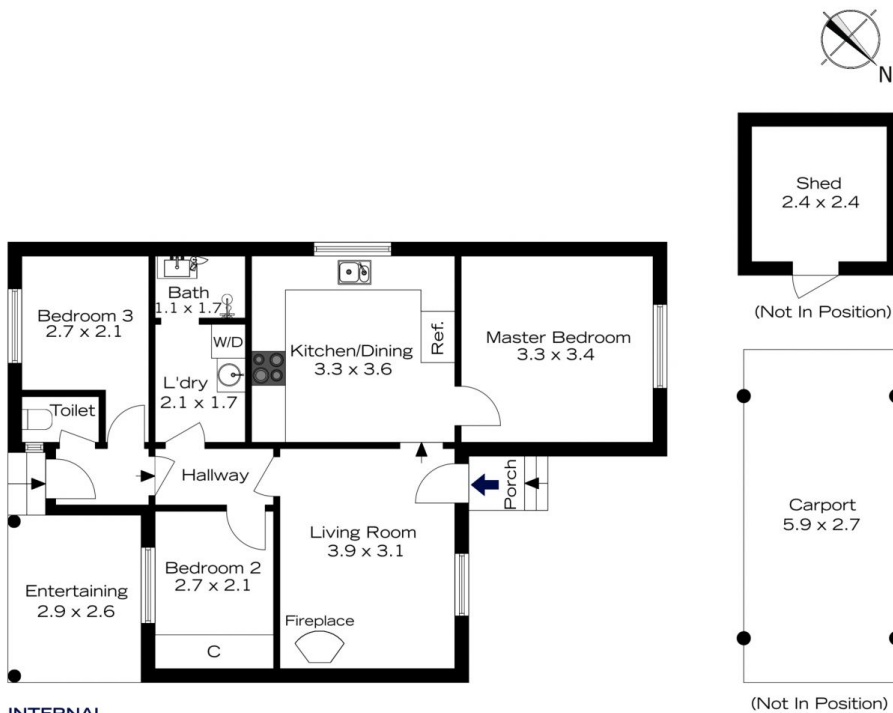
EXTERNAL
8 m²

TOTAL
77 m²



The floor plan is not to scale; measurements are indicative and in metres. All features included in this 3D plan are for inspiration purposes only. This is not an exact replica of the property or the position of exterior elements. Plans should not be relied on. Interested parties should make and rely on their own enquiries.

7 THE VALLEY ROAD, VALLEY HEIGHTS



INTERNAL
68 m²

EXTERNAL
8 m²

TOTAL
77 m²



The floor plan is not to scale; measurements are indicative and in metres. Exterior elements are not in position. Plans should not be relied on. Interested parties should make and rely on their own enquiries.