



81 Hawkesbury Road Springwood NSW

3 1 1

LOCATION - Privately tucked away behind stunning entrance gates, well off the street in a highly sought after area of Springwood, this splendid home is a mere 250m walk to local Ellison Public School, within 600m of Springwood Golf & Country Club and within 1.8km to Springwood Village, with all community amenities, including popular village shopping precinct, restaurants and cafe's.

STYLE - Flawlessly renovated and much loved single level clad cottage style home with colourbond roof, showcasing an abundance of character, including high ceilings, decorative cornices and beautifully established cottage style gardens on a mostly flat block of approx. 904m2 with side vehicle access to separate lock up garage.

LAYOUT - Two light filled living spaces, impressive lounge with feature gas fireplace flowing into dining area, central

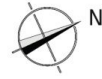
Type : House
Price : \$ 1,000,000
Land Size : 904 sqm
View : <https://www.chapmanrealestate.com.au/sale/nsw/hawkesbury/springwood/residential/home/7423365>



Helen Harris
02 4751 8266

[For full version visit the website](https://www.chapmanrealestate.com.au)

81 HAWKESBURY ROAD, SPRINGWOOD



INTERNAL
132 m²

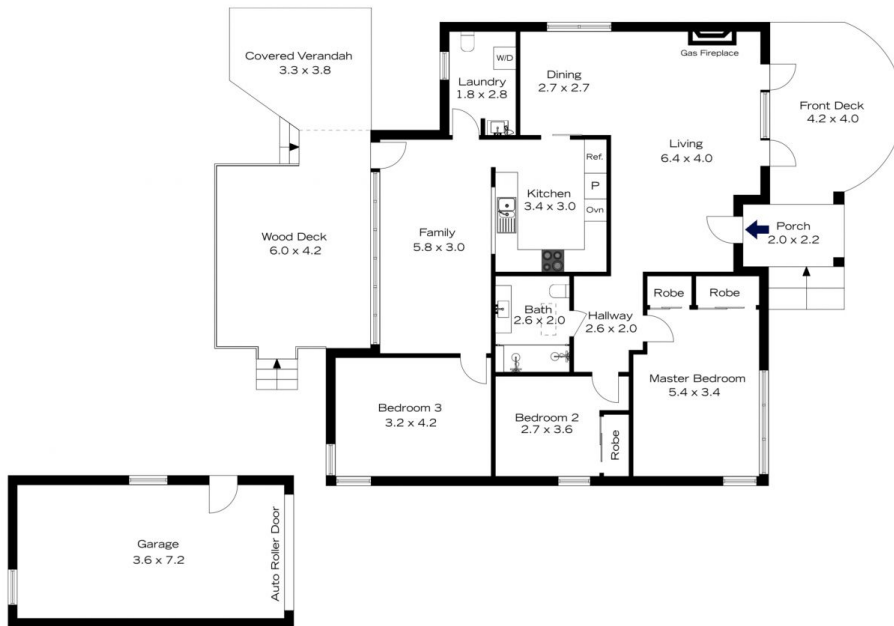
EXTERNAL
54 m²

TOTAL
186 m²



The floor plan is not to scale; measurements are indicative and in metres. All features included in this 3D plan are for inspiration purposes only. This is not an exact replica of the property or the position of exterior elements. Plans should not be relied on. Interested parties should make and rely on their own enquiries.

81 HAWKESBURY ROAD, SPRINGWOOD



(Not In Position)

INTERNAL
132 m²

EXTERNAL
54 m²

TOTAL
186 m²



The floor plan is not to scale; measurements are indicative and in metres. Exterior elements are not in position. Plans should not be relied on. Interested parties should make and rely on their own enquiries.