



## 22 Grand View Drive Mount Riverview NSW

4 🛏 3 🚿 1 🚗

**LOCATION** - This four bedroom family residence is situated on one of Mount Riverview's most popular streets. Nestled on a 701sqm block, this home is close to daycare and schools, shops, parks, cafes and scenic bushwalks. This beautiful property offers sweeping bush views.

**STYLE** - Stylishly renovated in key areas, this spacious home offers a modern interior with a stunning backdrop. Overlooking the National Park, take in the panoramic bush views from your very own backyard. The kitchen is awash with natural light, and has been tastefully upgraded. With white stone benchtops, a modern geometric tile splashback and modern grey, shaker style cabinetry, the kitchen and meals area is a sensational space. This home has wooden floors and tiles throughout, as well

**Type** : House  
**Price** : \$ 950,000  
**Land Size** : 701 sqm  
**View** : <https://www.chapmanrealestate.com.au/sale/nsw/hawkesbury/mount-riverview/residential/house/7379017>

[For full version visit the website](#)



**Kate Spence**  
02 4739 6200



**Sarah Watson**  
02 4739 4311

# 22 GRAND VIEW DRIVE, MOUNT RIVERVIEW



Ground Floor

Lower Ground Floor

**INTERNAL**  
221 m<sup>2</sup>

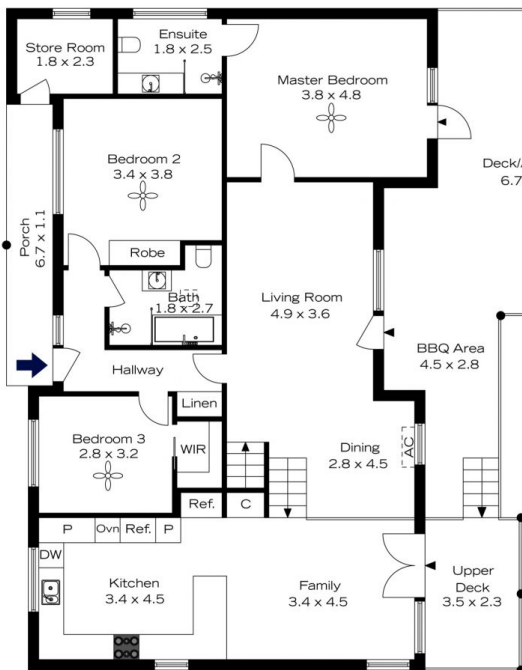
**EXTERNAL**  
95 m<sup>2</sup>

**TOTAL**  
316 m<sup>2</sup>

The floor plan is not to scale; measurements are indicative and in metres. Exterior elements are not in position. Plans should not be relied on. Interested parties should make and rely on their own enquiries.



# 22 GRAND VIEW DRIVE, MOUNT RIVERVIEW



Ground Floor

Lower Ground Floor

**INTERNAL**  
221 m<sup>2</sup>

**EXTERNAL**  
95 m<sup>2</sup>

**TOTAL**  
316 m<sup>2</sup>

The floor plan is not to scale; measurements are indicative and in metres. All features included in this 3D plan are for inspiration purposes only. This is not an exact replica of the property or the position of exterior elements. Plans should not be relied on. Interested parties should make and rely on their own enquiries.

