

### 1/85 Olivet Street Glenbrook NSW

3 1 2

**LOCATION** - Peacefully and privately set in the prestigious Mount Sion Estate, surrounded by quality homes with manicured gardens, wide streets and underground power. A stroll to serene bush walks and bike tracks and a short 5-minute drive to charming Glenbrook village, lagoon, parks and schools.

**STYLE** - Light-filled double storey duplex of brick and clad construction with tile roof offering spacious living, outdoor entertaining and a cosy grassy yard.

**LAYOUT** - Large living room, open plan dining off kitchen, 3 good sized bedrooms all with built-in robes, generous 3-way bathroom, 2 toilets overall.

**FEATURES** - Spacious kitchen with stainless steel appliances with plenty of bench and cupboard space, reverse cycle air conditioning, ceiling fans, gas bayonet,

**Type** : House  
**Price** : \$ 760,000  
**Land Size** : 478 sqm  
**View** : <https://www.chapmanrealestate.com.au/sale/nsw/blue-mountains-surrounds/glenbrook/residential/house/7358328>



**Glen Power**  
02 4739 4311



**Kate Spence**  
02 4739 6200

[For full version visit the website](https://www.chapmanrealestate.com.au)

1/85 OLIVET STREET, GLENBROOK



Ground Floor



First Floor

**INTERNAL**  
166 m<sup>2</sup>

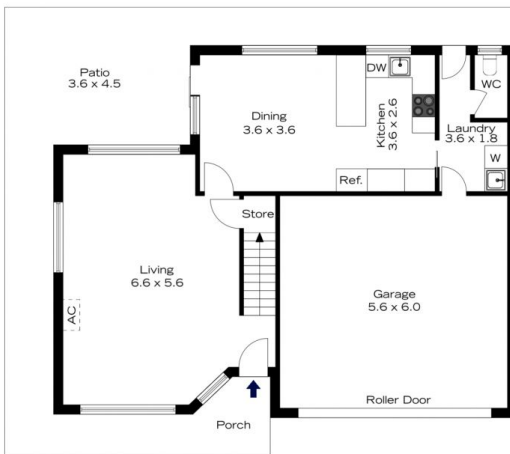
**EXTERNAL**  
45 m<sup>2</sup>

**TOTAL**  
211 m<sup>2</sup>



The floor plan is not to scale; measurements are indicative and in metres. All features included in this 3D plan are for inspiration purposes only. This is not an exact replica of the property or the position of exterior elements. Plans should not be relied on. Interested parties should make and rely on their own enquiries.

1/85 OLIVET STREET, GLENBROOK



Ground Floor



First Floor

**INTERNAL**  
166 m<sup>2</sup>

**EXTERNAL**  
45 m<sup>2</sup>

**TOTAL**  
211 m<sup>2</sup>



The floor plan is not to scale; measurements are indicative and in metres. Exterior elements are not in position. Plans should not be relied on. Interested parties should make and rely on their own enquiries.