



### 6 Grant Street Woodford NSW

3 1

**LOCATION** - A quiet street backing to bush within 1km to rail and the local café with easy access to the Great Western Highway. Woodford features a variety of bush walks, tracks and trail with a local park, tennis court and just a short distance to Hazelbrook village.

**STYLE** - A deceiving and stylish single level brick home with tile roof. Set on a stunning 1530m<sup>2</sup> north facing block with established gardens and natural rock face.

**LAYOUT** - A light filled lounge room flows through to the modern kitchen with dining space, three generous bedrooms including built-ins to the main large, recently renovated bathroom with separate toilet.

**FEATURES** - Renovated kitchen with gas cook top and dishwasher, split system A/C, gas heating outlets,

**Price** : \$ 745,000  
**Land Size** : 1530 sqm  
**View** : <https://www.chapmanrealestate.com.au/sale/nsw/blue-mountains-surrounds/woodford/residential/house/7345666>



**Jonathan Crisp**  
02 4751 8266

# 6 GRANT STREET, WOODFORD



**INTERNAL**  
78 m<sup>2</sup>

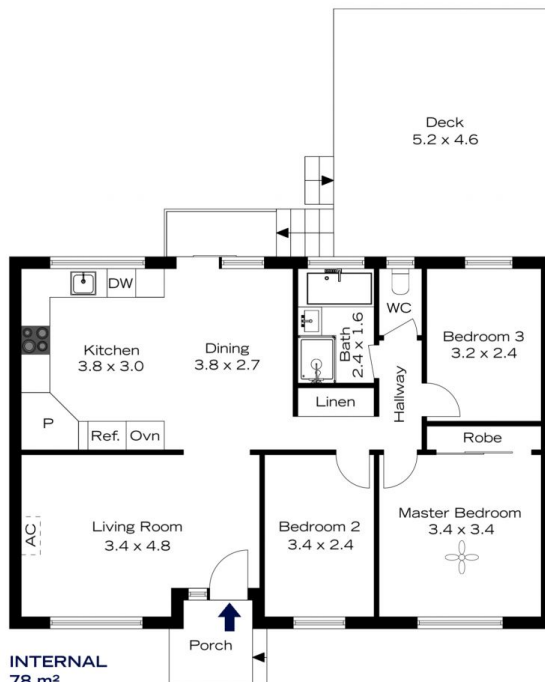
**EXTERNAL**  
29 m<sup>2</sup>

**TOTAL**  
107 m<sup>2</sup>



The floor plan is not to scale; measurements are indicative and in metres. All features included in this 3D plan are for inspiration purposes only. This is not an exact replica of the property or the position of exterior elements. Plans should not be relied on. Interested parties should make and rely on their own enquiries.

# 6 GRANT STREET, WOODFORD



**INTERNAL**  
78 m<sup>2</sup>

**EXTERNAL**  
29 m<sup>2</sup>

**TOTAL**  
107 m<sup>2</sup>



The floor plan is not to scale; measurements are indicative and in metres. Exterior elements are not in position. Plans should not be relied on. Interested parties should make and rely on their own enquiries.