



54 Matthew Parade Blaxland NSW

4 2

LOCATION - Nestled on a gorgeous landscaped block of approx. 556m2, one of only a few properties facing the large grounds of Lennox Park with its tennis courts, cricket nets, picnic tables, large green spaces & kids playground. This is a quiet, family friendly street only 1.4km to Blaxland Rail & less than 10km to Westfield Penrith.

STYLE - Stunning single level home, rendered brick facade with colorbond roof, exuding an abundance of character and charm.

LAYOUT - Spacious yet cosy design - two generous living spaces perfectly designed to cater for family living, gourmet open plan kitchen with adjoining dining area, 4 bedrooms (3 with built in wardrobes, the 4th bedroom currently set up as kids retreat with European style laundry), study area/third living, two bathrooms, over-sized spotted gum

Type : House
Price : \$ 1,153,211
Land Size : 556 sqm
View : <https://www.chapmanrealestate.com.au/sale/nsw/blue-mountains-surrounds/blaxland/residential/house/7333605>

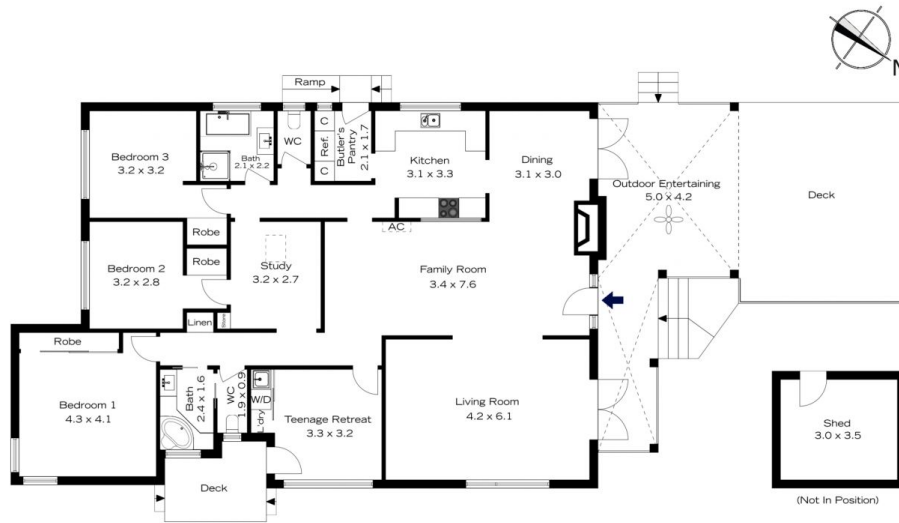


Sarah Watson
02 4739 4311

[For full version visit the website](https://www.chapmanrealestate.com.au)

<https://www.chapmanrealestate.com.au>

54 MATTHEW PARADE, BLAXLAND



INTERNAL
170 m²

EXTERNAL
76 m²

TOTAL
246 m²



The floor plan is not to scale; measurements are indicative and in metres. Exterior elements are not in position. Plans should not be relied on. Interested parties should make and rely on their own enquiries.

54 MATTHEW PARADE, BLAXLAND



INTERNAL
170 m²

EXTERNAL
76 m²

TOTAL
246 m²



The floor plan is not to scale; measurements are indicative and in metres. All features included in this 3D plan are for inspiration purposes only. This is not an exact replica of the property or the position of exterior elements. Plans should not be relied on. Interested parties should make and rely on their own enquiries.