



28 Martin Place Faulconbridge NSW

3 2 2

LOCATION - Quiet location, easy walking distance to bus and train, on a great approx. 2852 m2 block backing superb bushland, bush walks in your own backyard.

STYLE - Tri level architecturally designed double brick and tile home, with great bush views.

LAYOUT - 3 generous bedrooms, all with built-ins, main has ensuite, separate dining and living, solid Tassy Oak kitchen and gas cooking with eat in area, rumpus downstairs, internal laundry and garage with internal access.

FEATURES - Spacious living and dining are separated by open fire place, deck off living area overlooking lovely bush block of 2852 m2 with established gardens, semi fenced yard and rear access to usable land.

Price : \$ 910,099

Land Size : 2852 sqm

View : <https://www.chapmanrealestate.com.au/sale/nsw/hawkesbury/faulconbridge/residential/house/7327949>



Jonathan Crisp
02 4751 8266

Disclaimer:

All information contained herein is gathered from sources

28 MARTIN PLACE, FAULCONBRIDGE

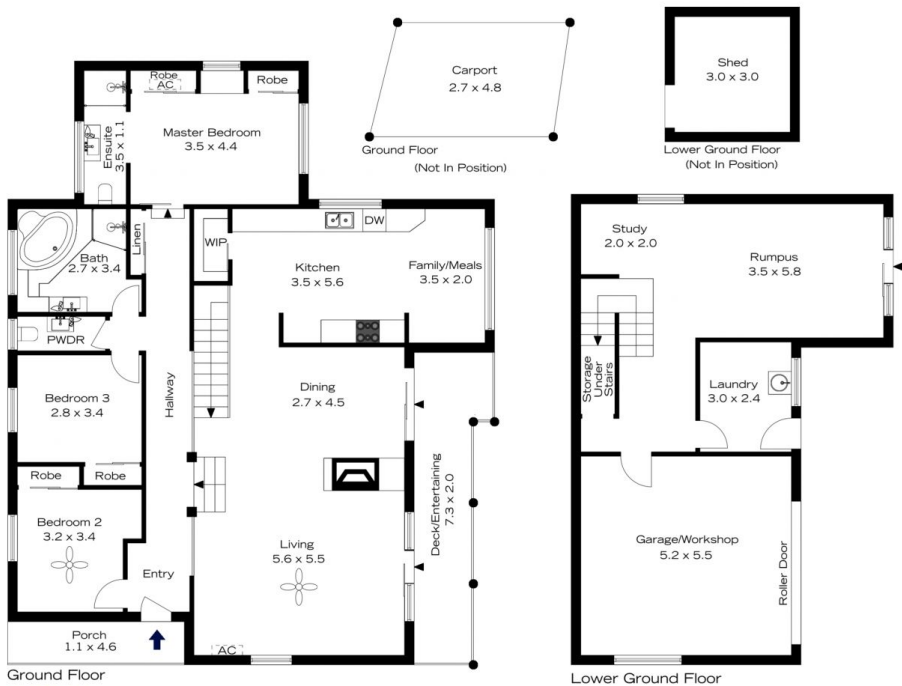


INTERNAL
238 m²
EXTERNAL
19 m²
TOTAL
257 m²



The floor plan is not to scale; measurements are indicative and in metres. All features included in this 3D plan are for inspiration purposes only. This is not an exact replica of the property or the position of exterior elements. Plans should not be relied on. Interested parties should make and rely on their own enquiries.

28 MARTIN PLACE, FAULCONBRIDGE



INTERNAL
238 m²
EXTERNAL
19 m²
TOTAL
257 m²



The floor plan is not to scale; measurements are indicative and in metres. Exterior elements are not in position. Plans should not be relied on. Interested parties should make and rely on their own enquiries.